

COMBINED NEEDLE ROLLER BEARINGS

WITH AXIAL BALL BEARINGS WITHOUT INNER RINGS



NKX

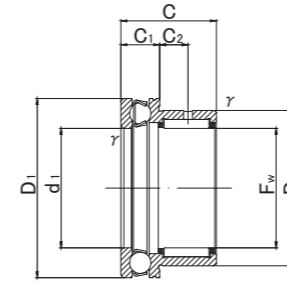
NKX.Z



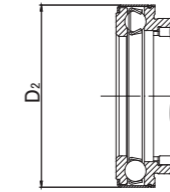
NKX



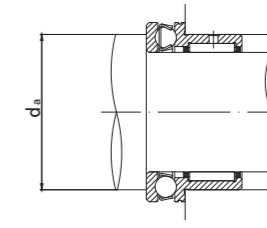
NKX..Z



NKX



NKX..Z



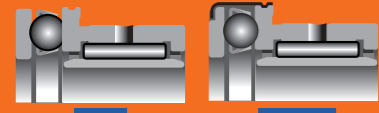
NKX, NKX..Z TYPE

Shaft diameter (mm)	Designation		Dimensions (mm)									Standard mounting dimensions (mm)	Basic dynamic load rating		Basic static load rating		Limiting speed (Grease)*	Mass (g approx.)	Usable bearing designation	
	Open type	With dust cover											Radial	Axial	Radial	Axial			INNER RING	WITH INNER RING
	Grease pre-packed in thrust section		Fw	D	D1	D2	C	C1	C2	rs min	d1		da MIN	Cr N	Cor N	rpm				
10	NKX10 —	— NKX10Z	10 +0.022 10 +0.013	19 19	24 —	— 25	23 23	9 9	6.5 6.5	0.3 0.3	10 10	18 18	8 200 8 200	10 000 10 000	9 200 9 200	14 000 14 000	9 500 9 500	36 37.5	IR71016 IR71016	NKXI 7 NKXI 7Z
12	NKX12 —	— NKX12Z	12 +0.027 12 +0.016	21 21	26 —	— 27	23 23	9 9	6.5 6.5	0.3 0.3	12 12	20 20	9 200 9 200	10 300 10 300	11 200 11 200	15 400 15 400	9 200 9 200	40.5 42	IR91216 IR91216	NKXI 9 NKXI 9Z
15	NKX15 —	— NKX15Z	15 +0.027 15 +0.016	24 24	28 —	— 29	23 23	9 9	6.5 6.5	0.3 0.3	15 15	23 23	12 400 12 400	10 500 10 500	14 900 14 900	16 800 16 800	8 800 8 800	44 45.5	IR121516 IR121516	NKXI 12 NKXI 12Z
17	NKX17 —	— NKX17Z	17 +0.027 17 +0.016	26 26	30 —	— 31	25 25	9 9	8 8	0.3 0.3	17 17	25 25	12 800 12 800	10 800 10 800	16 300 16 300	18 200 18 200	8 500 8 500	52 53.5	IR141717 IR141717	NKXI 14 NKXI 14Z
20	NKX20 —	— NKX20Z	20 +0.033 20 +0.020	30 30	35 —	— 36	30 30	10 10	10.5 10.5	0.3 0.3	20 20	29 29	17 600 17 600	14 200 14 200	25 400 25 400	24 700 24 700	7 500 7 500	83 85.5	IR172020 IR172020	NKXI 17 NKXI 17Z
25	NKX25 —	— NKX25Z	25 +0.033 25 +0.020	37 37	42 —	— 43	30 30	11 11	9.5 9.5	0.6 0.6	25 25	35 35	20 000 20 000	19 600 19 600	32 200 32 200	37 300 37 300	6 500 6 500	124.5 127.5	IR202520 IR202520	NKXI 20 NKXI 20Z
30	NKX30 —	— NKX30Z	30 +0.033 30 +0.020	42 42	47 —	— 48	30 30	11 11	9.5 9.5	0.6 0.6	30 30	40 40	25 100 25 100	20 400 20 400	40 100 40 100	42 200 42 200	6 200 6 200	141.5 145	IR253020 IR253020	NKXI 25 NKXI 25Z
35	NKX35 —	— NKX35Z	35 +0.041 35 +0.025	47 47	52 —	— 53	30 30	12 12	9 9	0.6 0.6	35 35	45 45	27 000 27 000	20 400 20 400	46 200 46 200	44 700 44 700	5 600 5 600	163 167.5	IR303520 IR303520	NKXI 30 NKXI 30Z
40	NKX40 —	— NKX40Z	40 +0.041 40 +0.025	52 52	60 —	— 61	32 32	13 13	10 10	0.6 0.6	40 40	52 52	29 400 29 400	26 900 26 900	54 100 54 100	62 900 62 900	5 000 5 000	214 220	IR354020 IR354020	NKXI 35 NKXI 35Z
45	NKX45 —	— NKX45Z	45 +0.041 45 +0.025	58 58	65 —	— 66.5	32 32	14 14	9 9	0.6 0.6	45 45	57 57	31 100 31 100	27 900 27 900	60 100 60 100	69 200 69 200	4 600 4 600	251 264.5	IR404520 IR404520	NKXI 40 NKXI 40Z
50	NKX50 —	— NKX50Z	50 +0.041 50 +0.025	62 62	70 —	— 71.5	35 35	14 14	10 10	0.6 0.6	50 50	62 62	43 000 43 000	28 700 28 700	85 200 85 200	75 400 75 400	4 500 4 500	277 291.5	IR455025 IR455025	NKXI 45 NKXI 45Z
60	NKX60 —	— NKX60Z	60 +0.049 60 +0.030	72 72	85 —	— 86.5	40 40	17 17	12 12	1 1	60 60	75 75	47 500 47 500	41 400 41 400	103 000 103 000	113 000 113 000	3 700 3 700	443 465.5	IR506025 IR506025	NKXI 50 NKXI 50Z
70	NKX70 —	— NKX70Z	70 +0.049 70 +0.030	85 85	95 —	— 96.5	40 40	18 18	11 11	1 1	70 70	85 85	55 500 55 500	43 100 43 100	120 600 120 600	127 000 127 000	3 400 3 400	577 601	IR607025 IR607025	NKXI 60 NKXI 60Z

* Suitable for oil lubrication. In case of grease lubrication, down to 70% of this value.

COMBINED NEEDLE ROLLER BEARINGS

WITH AXIAL BALL BEARINGS WITH INNER RINGS



NKXI

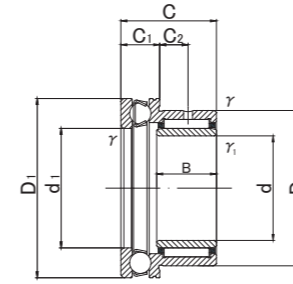
NKXI.Z



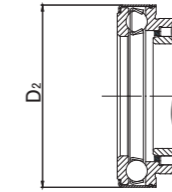
NKXI



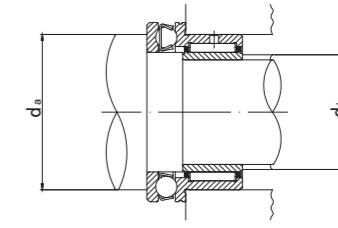
NKXI.Z



NKXI



NKXI.Z



NKXI, NKXI.Z TYPE

Shaft diameter (mm)	Designation		Dimensions (mm)										Standard mounting dimensions (mm)		Basic dynamic load rating		Basic static load rating		Limiting speed (Grease)*	Mass (g approx.)	Usable bearing designation		
	Open type	With dust cover													Radial		Radial				OUTER RING	INNER RING	
	Grease pre-packed in thrust section		d	D	D1	D2	B	C	C1	C2	r _s min	r _{s1} min	d1	da MIN	db	Cr N	Cor N	rpm			g (approx.)	OUTER RING	INNER RING
7	NKXI 7	—	7 ₀	19	24	25	16	23	9	6.5	0.3	0.3	10	18	9	8 200	10 000	9 200	14 000	9 500	41	NKX10	IR71016
	—	NKXI 7Z	7 _{-0.008}	19	24	25	16	23	9	6.5	0.3	0.3	10	18	9	8 200	10 000	9 200	14 000	9 500	42.5	NKX10Z	IR71016
9	NKXI 9	—	9 ₀	21	26	27	16	23	9	6.5	0.3	0.3	12	20	11	9 200	10 300	11 200	15 400	9 200	46.5	NKX12	IR91216
	—	NKXI 9Z	9 _{-0.008}	21	26	27	16	23	9	6.5	0.3	0.3	12	20	11	9 200	10 300	11 200	15 400	9 200	48	NKX12Z	IR91216
12	NKXI 12	—	12 ₀	24	28	29	16	23	9	6.5	0.3	0.3	15	23	14	12 400	10 500	14 900	16 800	8 800	51.8	NKX15	IR121516
	—	NKXI 12Z	12 _{-0.008}	24	28	29	16	23	9	6.5	0.3	0.3	15	23	14	12 400	10 500	14 900	16 800	8 800	53.3	NKX15Z	IR121516
14	NKXI 14	—	14 ₀	26	30	31	17	25	9	8	0.3	0.3	17	25	16	12 800	10 800	16 300	18 200	8 500	61.5	NKX17	IR141717
	—	NKXI 14Z	14 _{-0.008}	26	30	31	17	25	9	8	0.3	0.3	17	25	16	12 800	10 800	16 300	18 200	8 500	63	NKX17Z	IR141717
17	NKXI 17	—	17 ₀	30	35	36	20	30	10	10.5	0.3	0.3	20	29	19	17 600	14 200	25 400	24 700	7 500	97	NKX20	IR172020
	—	NKXI 17Z	17 _{-0.008}	30	35	36	20	30	10	10.5	0.3	0.3	20	29	19	17 600	14 200	25 400	24 700	7 500	99.5	NKX20Z	IR172020
20	NKXI 20	—	20 ₀	37	42	43	20	30	11	9.5	0.6	0.3	25	35	24	20 000	19 600	32 200	37 300	6 500	151.5	NKX25	IR202520
	—	NKXI 20Z	20 _{-0.010}	37	42	43	20	30	11	9.5	0.6	0.3	25	35	24	20 000	19 600	32 200	37 300	6 500	154.5	NKX25Z	IR202520
25	NKXI 25	—	25 ₀	42	47	48	20	30	11	9.5	0.6	0.3	30	40	29	25 100	20 400	40 100	42 200	6 200	174.5	NKX30	IR253020
	—	NKXI 25Z	25 _{-0.010}	42	47	48	20	30	11	9.5	0.6	0.3	30	40	29	25 100	20 400	40 100	42 200	6 200	178	NKX30Z	IR253020
30	NKXI 30	—	30 ₀	47	52	53	20	30	12	9	0.6	0.3	35	45	34	27 000	20 400	46 200	44 700	5 600	201.5	NKX35	IR303520
	—	NKXI 30Z	30 _{-0.010}	47	52	53	20	30	12	9	0.6	0.3	35	45	34	27 000	20 400	46 200	44 700	5 600	206	NKX35Z	IR303520
35	NKXI 35	—	35 ₀	52	60	61	20	32	13	10	0.6	0.3	40	52	39	29 400	26 900	54 100	62 900	5 000	260	NKX40	IR354020
	—	NKXI 35Z	35 _{-0.012}	52	60	61	20	32	13	10	0.6	0.3	40	52	39	29 400	26 900	54 100	62 900	5 000	266	NKX40Z	IR354020
40	NKXI 40	—	40 ₀	58	65	66.5	20	32	14	9	0.6	0.3	45	57	44	31 100	27 900	60 100	69 200	4 600	302	NKX45	IR404520
	—	NKXI 40Z	40 _{-0.012}	58	65	66.5	20	32	14	9	0.6	0.3	45	57	44	31 100	27 900	60 100	69 200	4 600	315.5	NKX45Z	IR404520
45	NKXI 45	—	45 ₀	62	70	71.5	25	35	14	10	0.6	0.6	50	62	49	43 000	28 700	85 200	75 400	4 500	348	NKX50	IR455025
	—	NKXI 45Z	45 _{-0.012}	62	70	71.5	25	35	14	10	0.6	0.6	50	62	49	43 000	28 700	85 200	75 400	4 500	362.5	NKX50Z	IR455025
50	NKXI 50	—	50 ₀	72	85	86.5	25	40	17	12	1	1	60	75	59	47 500	41 400	103 000	113 000	3 700	606	NKX60	IR506025
	—	NKXI 50Z	50 _{-0.012}	72	85	86.5	25	40	17	12	1	1	60	75	59	47 500	41 400	103 000	113 000	3 700	628.5	NKX60Z	IR506025
60	NKXI 60	—	60 ₀	85	95	96.5	25	40	18	11	1	1	70	85	68	55 500	43 100	120 600	127 000	3 400	772	NKX70	IR607025
	—	NKXI 60Z	60 _{-0.015}	85	95	96.5	25	40	18	11	1	1	70	85	68	55 500	43 100	120 600	127 000	3 400	796	NKX70Z	IR607025

* Suitable for oil lubrication. In case of grease lubrication, down to 70% of this value.

COMBINED NEEDLE ROLLER BEARINGS

WITH AXIAL BALL BEARINGS WITHOUT INNER RINGS



NKX

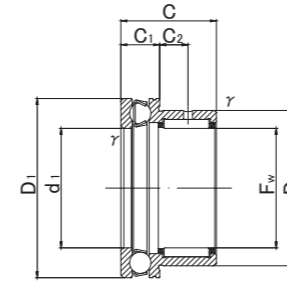
NKX.Z



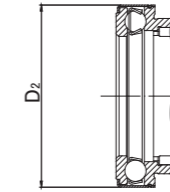
NKX



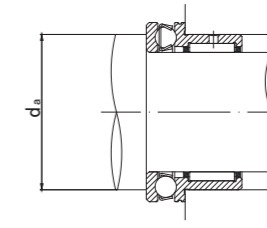
NKX.Z



NKX



NKX.Z



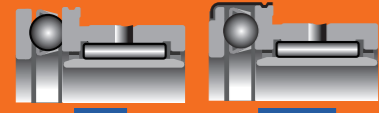
NKX, NKX.Z TYPE

Shaft diameter (mm)	Designation		Dimensions (mm)									Standard mounting dimensions (mm)	Basic dynamic load rating		Basic static load rating		Limiting speed (Grease)*	Mass (g approx.)	Usable bearing designation		
	Open type	With dust cover	Fw	D	D1	D2	C	C1	C2	r _{s min}	d1		da MIN	Radial	Axial	Radial			Axial	INNER RING	WITH INNER RING
														Cr N		Cor N					
10	NKX10	—	10 +0.022	19	24	—	23	9	6.5	0.3	10	18	8 200	10 000	9 200	14 000	9 500	36	IR71016	NKXI 7	
	—	NKX10Z	10 +0.013	19	—	25	23	9	6.5	0.3	10	18	8 200	10 000	9 200	14 000	9 500	37.5	IR71016	NKXI 7Z	
12	NKX12	—	12 +0.027	21	26	—	23	9	6.5	0.3	12	20	9 200	10 300	11 200	15 400	9 200	40.5	IR91216	NKXI 9	
	—	NKX12Z	12 +0.016	21	—	27	23	9	6.5	0.3	12	20	9 200	10 300	11 200	15 400	9 200	42	IR91216	NKXI 9Z	
15	NKX15	—	15 +0.027	24	28	—	23	9	6.5	0.3	15	23	12 400	10 500	14 900	16 800	8 800	44	IR121516	NKXI 12	
	—	NKX15Z	15 +0.016	24	—	29	23	9	6.5	0.3	15	23	12 400	10 500	14 900	16 800	8 800	45.5	IR121516	NKXI 12Z	
17	NKX17	—	17 +0.027	26	30	—	25	9	8	0.3	17	25	12 800	10 800	16 300	18 200	8 500	52	IR141717	NKXI 14	
	—	NKX17Z	17 +0.016	26	—	31	25	9	8	0.3	17	25	12 800	10 800	16 300	18 200	8 500	53.5	IR141717	NKXI 14Z	
20	NKX20	—	20 +0.033	30	35	—	30	10	10.5	0.3	20	29	17 600	14 200	25 400	24 700	7 500	83	IR172020	NKXI 17	
	—	NKX20Z	20 +0.020	30	—	36	30	10	10.5	0.3	20	29	17 600	14 200	25 400	24 700	7 500	85.5	IR172020	NKXI 17Z	
25	NKX25	—	25 +0.033	37	42	—	30	11	9.5	0.6	25	35	20 000	19 600	32 200	37 300	6 500	124.5	IR202520	NKXI 20	
	—	NKX25Z	25 +0.020	37	—	43	30	11	9.5	0.6	25	35	20 000	19 600	32 200	37 300	6 500	127.5	IR202520	NKXI 20Z	
30	NKX30	—	30 +0.033	42	47	—	30	11	9.5	0.6	30	40	25 100	20 400	40 100	42 200	6 200	141.5	IR253020	NKXI 25	
	—	NKX30Z	30 +0.020	42	—	48	30	11	9.5	0.6	30	40	25 100	20 400	40 100	42 200	6 200	145	IR253020	NKXI 25Z	
35	NKX35	—	35 +0.041	47	52	—	30	12	9	0.6	35	45	27 000	20 400	46 200	44 700	5 600	163	IR303520	NKXI 30	
	—	NKX35Z	35 +0.025	47	—	53	30	12	9	0.6	35	45	27 000	20 400	46 200	44 700	5 600	167.5	IR303520	NKXI 30Z	
40	NKX40	—	40 +0.041	52	60	—	32	13	10	0.6	40	52	29 400	26 900	54 100	62 900	5 000	214	IR354020	NKXI 35	
	—	NKX40Z	40 +0.025	52	—	61	32	13	10	0.6	40	52	29 400	26 900	54 100	62 900	5 000	220	IR354020	NKXI 35Z	
45	NKX45	—	45 +0.041	58	65	—	32	14	9	0.6	45	57	31 100	27 900	60 100	69 200	4 600	251	IR404520	NKXI 40	
	—	NKX45Z	45 +0.025	58	—	66.5	32	14	9	0.6	45	57	31 100	27 900	60 100	69 200	4 600	264.5	IR404520	NKXI 40Z	
50	NKX50	—	50 +0.041	62	70	—	35	14	10	0.6	50	62	43 000	28 700	85 200	75 400	4 500	277	IR455025	NKXI 45	
	—	NKX50Z	50 +0.025	62	—	71.5	35	14	10	0.6	50	62	43 000	28 700	85 200	75 400	4 500	291.5	IR455025	NKXI 45Z	
60	NKX60	—	60 +0.049	72	85	—	40	17	12	1	60	75	47 500	41 400	103 000	113 000	3 700	443	IR506025	NKXI 50	
	—	NKX60Z	60 +0.030	72	—	86.5	40	17	12	1	60	75	47 500	41 400	103 000	113 000	3 700	465.5	IR506025	NKXI 50Z	
70	NKX70	—	70 +0.049	85	95	—	40	18	11	1	70	85	55 500	43 100	120 600	127 000	3 400	577	IR607025	NKXI 60	
	—	NKX70Z	70 +0.030	85	—	96.5	40	18	11	1	70	85	55 500	43 100	120 600	127 000	3 400	601	IR607025	NKXI 60Z	

* Suitable for oil lubrication. In case of grease lubrication, down to 70% of this value.

COMBINED NEEDLE ROLLER BEARINGS

WITH AXIAL BALL BEARINGS WITH INNER RINGS



NKXI

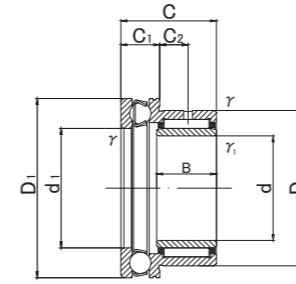
NKXI.Z



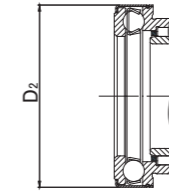
NKXI



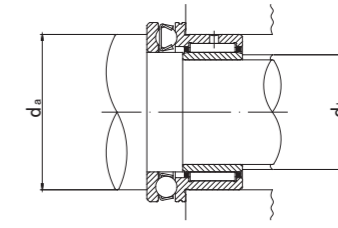
NKXI.Z



NKXI



NKXI.Z



NKXI, NKXI.Z TYPE

Shaft diameter (mm)	Designation		Dimensions (mm)										Standard mounting dimensions (mm)		Basic dynamic load rating		Basic static load rating		Limiting speed (Grease)*	Mass (g approx.)	Usable bearing designation			
	Open type	With dust cover	d	D	D1	D2	B	C	C1	C2	rs min	rs1 min	d1	da MIN	db	Radial		Radial			rpm	OUTER RING	INNER RING	
																Cr N	Cor N							
7	NKXI 7	—	7 ₀	19	24	25	16	23	9	6.5	0.3	0.3	10	18	9	8 200	10 000	9 200	14 000	9 500	41	NKX10	IR71016	
	—	NKXI 7Z	7 _{-0.008}	19	24	25	16	23	9	6.5	0.3	0.3	10	18	9	8 200	10 000	9 200	14 000	9 500	42.5	NKX10Z	IR71016	
9	NKXI 9	—	9 ₀	21	26	27	16	23	9	6.5	0.3	0.3	12	20	11	9 200	10 300	11 200	15 400	9 200	46.5	NKX12	IR91216	
	—	NKXI 9Z	9 _{-0.008}	21	26	27	16	23	9	6.5	0.3	0.3	12	20	11	9 200	10 300	11 200	15 400	9 200	48	NKX12Z	IR91216	
12	NKXI 12	—	12 ₀	24	28	29	16	23	9	6.5	0.3	0.3	15	23	14	12 400	10 500	14 900	16 800	8 800	51.8	NKX15	IR121516	
	—	NKXI 12Z	12 _{-0.008}	24	28	29	16	23	9	6.5	0.3	0.3	15	23	14	12 400	10 500	14 900	16 800	8 800	53.3	NKX15Z	IR121516	
14	NKXI 14	—	14 ₀	26	30	31	17	25	9	8	0.3	0.3	17	25	16	12 800	10 800	16 300	18 200	8 500	61.5	NKX17	IR141717	
	—	NKXI 14Z	14 _{-0.008}	26	30	31	17	25	9	8	0.3	0.3	17	25	16	12 800	10 800	16 300	18 200	8 500	63	NKX17Z	IR141717	
17	NKXI 17	—	17 ₀	30	35	36	20	30	10	10.5	0.3	0.3	20	29	19	17 600	14 200	25 400	24 700	7 500	97	NKX20	IR172020	
	—	NKXI 17Z	17 _{-0.008}	30	35	36	20	30	10	10.5	0.3	0.3	20	29	19	17 600	14 200	25 400	24 700	7 500	99.5	NKX20Z	IR172020	
20	NKXI 20	—	20 ₀	37	42	43	20	30	11	9.5	0.6	0.3	25	35	24	20 000	19 600	32 200	37 300	6 500	151.5	NKX25	IR202520	
	—	NKXI 20Z	20 _{-0.010}	37	42	43	20	30	11	9.5	0.6	0.3	25	35	24	20 000	19 600	32 200	37 300	6 500	154.5	NKX25Z	IR202520	
25	NKXI 25	—	25 ₀	42	47	48	20	30	11	9.5	0.6	0.3	30	40	29	25 100	20 400	40 100	42 200	6 200	174.5	NKX30	IR253020	
	—	NKXI 25Z	25 _{-0.010}	42	47	48	20	30	11	9.5	0.6	0.3	30	40	29	25 100	20 400	40 100	42 200	6 200	178	NKX30Z	IR253020	
30	NKXI 30	—	30 ₀	47	52	53	20	30	12	9	0.6	0.3	35	45	34	27 000	20 400	46 200	44 700	5 600	201.5	NKX35	IR303520	
	—	NKXI 30Z	30 _{-0.010}	47	52	53	20	30	12	9	0.6	0.3	35	45	34	27 000	20 400	46 200	44 700	5 600	206	NKX35Z	IR303520	
35	NKXI 35	—	35 ₀	52	60	61	20	32	13	10	0.6	0.3	40	52	39	29 400	26 900	54 100	62 900	5 000	260	NKX40	IR354020	
	—	NKXI 35Z	35 _{-0.012}	52	60	61	20	32	13	10	0.6	0.3	40	52	39	29 400	26 900	54 100	62 900	5 000	266	NKX40Z	IR354020	
40	NKXI 40	—	40 ₀	58	65	66.5	20	32	14	9	0.6	0.3	45	57	44	31 100	27 900	60 100	69 200	4 600	302	NKX45	IR404520	
	—	NKXI 40Z	40 _{-0.012}	58	65	66.5	20	32	14	9	0.6	0.3	45	57	44	31 100	27 900	60 100	69 200	4 600	315.5	NKX45Z	IR404520	
45	NKXI 45	—	45 ₀	62	70	71.5	25	35	14	10	0.6	0.6	50	62	49	43 000	28 700	85 200	75 400	4 500	348	NKX50	IR455025	
	—	NKXI 45Z	45 _{-0.012}	62	70	71.5	25	35	14	10	0.6	0.6	50	62	49	43 000	28 700	85 200	75 400	4 500	362.5	NKX50Z	IR455025	
50	NKXI 50	—	50 ₀	72	85	86.5	25	40	17	12	1	1	60	75	59	47 500	41 400	103 000	113 000	3 700	606	NKX60	IR506025	
	—	NKXI 50Z	50 _{-0.012}	72	85	86.5	25	40	17	12	1	1	60	75	59	47 500	41 400	103 000	113 000	3 700	628.5	NKX60Z	IR506025	
60	NKXI 60	—	60 ₀	85	95	96.5	25	40	18	11	1	1	70	85	68	55 500	43 100	120 600	127 000	3 400	772	NKX70	IR607025	
	—	NKXI 60Z	60 _{-0.015}	85	95	96.5	25	40	18	11	1	1	70	85	68	55 500	43 100	120 600	127 000	3 400	796	NKX70Z	IR607025	

* Suitable for oil lubrication. In case of grease lubrication, down to 70% of this value.