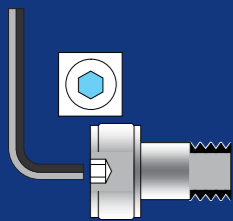


CAM FOLLOWERS

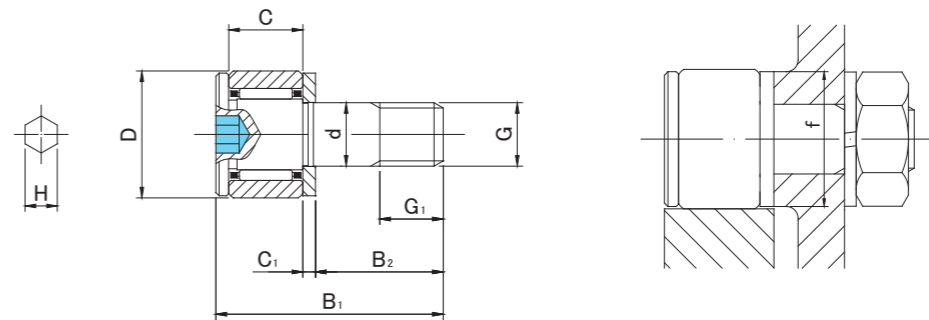
MINIATURE TYPE
HEXAGON SOCKET ON STUD HEAD



CFS..A



CFS..VA



CFS..A TYPE

Prepacked Grease

Stud diameter (mm)	h6 tolerance	Designation		Dimensions (mm)									f min	Basic dynamic load rating Cr N	Basic static load rating Cor N	Largest permissible load N	Max tightening torque N·m	Mass g (approx)
		Cylindrical outer ring With cage	Full roller	D	C	d	G	G1	B1	B2	C1	H						
2.5	0 -0.006	CFS 2.5A	—	5	3	2.5	M2.5×0.45	2.5	9.5	5	0.7	0.9	4.8	410	335	260	0.2	1
		—	CFS 2.5VA	1 000	1 080	260												
3	0 -0.006	CFS 3A	—	6	4	3	M3×0.5	3	11.5	6	0.7	1.5	5.8	630	610	360	0.3	2
		—	CFS 3VA	1 370	1 770	360												
4	0 -0.008	CFS 4A	—	8	5	4	M4×0.7	4	15	8	1	2	7.7	1 080	1 080	780	0.6	4
		—	CFS 4VA	2 350	3 040	780												
5	0 -0.008	CFS 5A	—	10	6	5	M5×0.8	5	18	10	1	2.5	9.6	1 570	1 860	1 420	1.3	7
		—	CFS 5VA	3 140	4 710	1 420												
6	0 -0.008	CFS 6A	—	12	7	6	M6×1	6	21.5	12	1.2	3	11.6	2 060	2 160	2 110	2.3	13
		—	CFS 6VA	4 610	6 270	2 110												

OUTER RINGS TOLERANCE (μm)

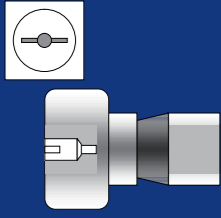
TYPE	Cylindrical outer ring
CFS2.5,CFS3,CFS4,CFS5,CFS6	0/-8

ACCESSORIES

TYPE	
All types	NUT Attached

CAM FOLLOWERS

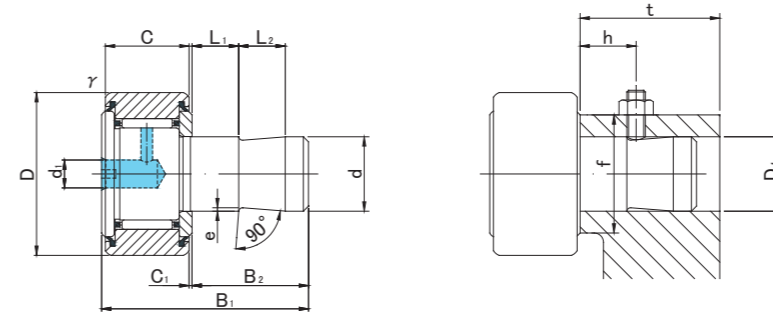
EASY MOUNTING TYPE
SCREWDRIVER SLOT HEAD



CF-SFU



CF-SFU.V



CF-SFU TYPE

Prepacked Grease

Stud diameter (mm)	h7 tolerance	Designation		Dimensions (mm)													Mounting dimensions (mm)			Basic dynamic load rating	Basic static load rating	Largest permissible load	Limiting speed	Track load capacity		Mass				
		R500(CF6~CF18) R1000(CF20≤)		D	C	d	B1	B2	C1	L1	L2	d1	e	rs min	D1 Tolerance	t Min	f Min	h (Ref)	Cr N					Cor N	N		rpm	Cylindrical outer ring N	Crowned outer ring N	g (approx)
		Cylindrical outer ring	Crowned outer ring																											
6	0 -0.012	CF-SFU-6	CF-SFU-6R	16	11	6	32	20	0.6	5	10	4	0.3	0.3	6	+0.012 0	20	11	10	3 630	3 630	2 110	17 500	3 430	1 080	19				
		CF-SFU-6V	CF-SFU-6VR																	6 960	8 530	2 110	8 400	3 430	1 080					
8	0 -0.015	CF-SFU-8	CF-SFU-8R	19	11	8	32	20	0.6	5	10	4	0.5	0.3	8	+0.015 0	20	13	10	4 310	4 710	4 710	14 000	4 020	1 370	28.5				
		CF-SFU-8V	CF-SFU-8VR																	8 130	11 170	4 710	6 300	4 020	1 370					
10	0 -0.015	CF-SFU-10	CF-SFU-10R	22	12	10	33	20	0.6	5	10	4	0.5	0.3	10	+0.015 0	20	15	10	5 390	6 860	6 860	11 900	4 700	1 670	43				
		CF-SFU-10V	CF-SFU-10VR																	9 510	14 500	7 450	5 250	4 700	1 670					
10	0 -0.015	CF-SFU-10-1	CF-SFU-10-1R	26	12	10	33	20	0.6	5	10	4	0.5	0.3	10	+0.015 0	20	15	10	5 390	6 860	6 860	11 900	5 490	2 060	58.5				
		CF-SFU-10-1V	CF-SFU-10-1VR																	9 510	14 500	7 450	5 250	5 490	2 060					
12	0 -0.018	CF-SFU-12	CF-SFU-12R	30	14	12	35	20	0.6	5	10	6	1	0.6	12	+0.018 0	20	20	10	7 940	9 800	9 800	9 800	7 060	2 450	93				
		CF-SFU-12V	CF-SFU-12VR																	13 430	19 700	11 270	4 200	7 060	2 450					
12	0 -0.018	CF-SFU-12-1	CF-SFU-12-1R	32	14	12	35	20	0.6	5	10	6	1	0.6	12	+0.018 0	20	20	10	7 940	9 800	9 800	9 800	7 450	2 740	103				
		CF-SFU-12-1V	CF-SFU-12-1VR																	13 430	19 700	11 270	4 200	7 450	2 740					
16	0 -0.018	CF-SFU-16	CF-SFU-16R	35	18	16	44.5	25	0.8	10	10	6	1	0.6	16	+0.018 0	25	24	15	12 050	18 330	18 330	7 000	11 200	3 140	164				
		CF-SFU-16V	CF-SFU-16VR																	20 680	37 630	19 800	3 150	11 200	3 140					
18	0 -0.018	CF-SFU-18	CF-SFU-18R	40	20	18	46.5	25	0.8	10	10	6	1	1	18	+0.018 0	25	26	15	14 700	25 200	25 200	5 950	14 400	3 720	235				
		CF-SFU-18V	CF-SFU-18VR																	25 280	51 350	26 560	2 450	14 400	3 720					
20	0 -0.021	CF-SFU-20	CF-SFU-20R	52	24	20	50.5	25	0.8	10	10	8	1	1	20	+0.021 0	25	36	15	20 680	34 600	32 140	4 900	23 200	8 230	436				
		CF-SFU-20V	CF-SFU-20VR																	33 120	64 480	32 140	2 450	23 200	8 230					
20	0 -0.021	CF-SFU-20-1	CF-SFU-20-1R	47	24	20	50.5	25	0.8	10	10	8	1	1	20	+0.021 0	25	36	15	20 680	34 600	32 140	4 900	21 000	7 150	361				
		CF-SFU-20-1V	CF-SFU-20-1VR																	32 120	64 480	32 140	2 450	21 000	7 150					

OUTER RINGS TOLERANCE (μm)

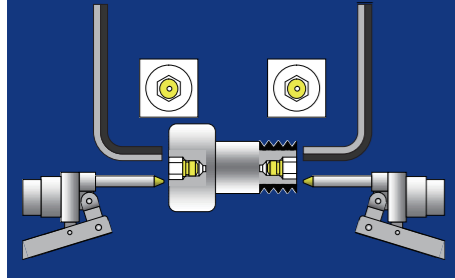
TYPE	Cylindrical outer ring	Crowned outer ring
CF6	0/-8	0/-50
CF8,CF10,CF10-1,CF12	0/-9	0/-50
CF12-1,CF16,CF18,CF20-1	0/-11	0/-50
CF20	0/-13	0/-50

ACCESSORIES

TYPE	STOP PLUG	RESIN PLUG
CF6/CF8/CF10/CF10-1	—	φ 4 Attached
CF12/CF12-1/CF16/CF18	φ 6 Attached	φ 6 Attached
CF20/CF20-1	φ 8 Attached	φ 8 Attached

CAM FOLLOWERS

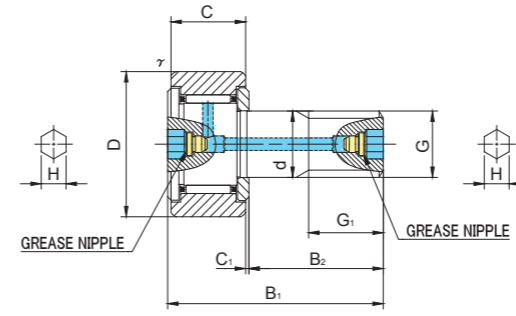
HEXAGON SOCKET ON BOTH SIDES
GREASE NIPPLE INSTALLED



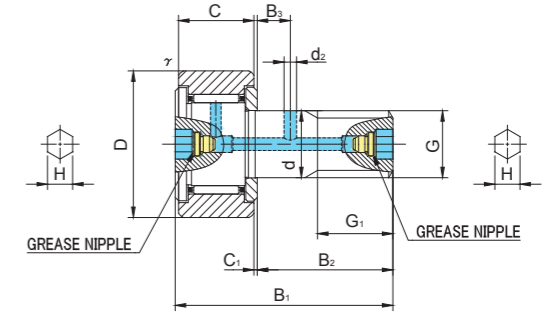
CF..AB



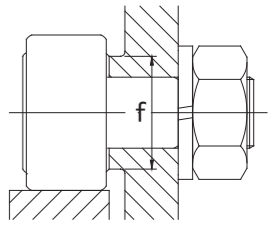
CF..VAB



CF10(V)ABK~CF10-1(V)ABK



CF12(V)AB~CF18(V)AB



CF..AB TYPE

Prepacked Grease

Stud diameter (mm)	Designation	Dimensions (mm)															Basic dynamic load rating	Basic static load rating	Largest permissible load	Limiting speed *	Track load capacity		Max tightening torque	Mass	
		Cylindrical outer ring				Crowned outer ring R500(CF10 ~ CF18) R1000(CF20 ≤)				Other dimensions											Cylindrical outer ring N	Crowned outer ring N			N·m
h7 tolerance	Without seals	With seals	Without seals	With seals	D	C	d	G	G1	B1	B2	B3	C1	d2	H	r _s min	f min	Cr N	Cor N	N	rpm	N	N	N·m	g (approx)
10	CF10ABK	CF10UUABK	CF10RABK	CF10UURABK	22	12	10	M10×1	12	36	23	—	0.6	—	5	0.3	15	5 390	6 860	6 860	17 000	4 700	1 670	15	45
	CF10VABK	CF10VUUABK	CF10VRABK	CF10VUURABK														9 510	14 500	7 450	7 500				
10	CF10-1ABK	CF10-1UUABK	CF10-1RABK	CF10-1UURABK	26	12	10	M10×1	12	36	23	—	0.6	—	5	0.3	15	5 390	6 860	6 860	17 000	5 490	2 060	15	60
	CF10-1VABK	CF10-1VUUABK	CF10-1VRABK	CF10-1VUURABK														9 510	14 500	7 450	7 500				
12	CF12AB	CF12UUAB	CF12RAB	CF12UURAB	30	14	12	M12×1.5	13	40	25	6	0.6	3	6	0.6	20	7 940	9 800	9 800	14 000	7 060	2 450	22	95
	CF12VAB	CF12VUUAB	CF12VRAB	CF12VUURAB														13 430	19 700	11 270	6 000				
12	CF12-1AB	CF12-1UUAB	CF12-1RAB	CF12-1UURAB	32	14	12	M12×1.5	13	40	25	6	0.6	3	6	0.6	20	7 940	9 800	9 800	14 000	7 450	2 740	22	105
	CF12-1VAB	CF12-1VUUAB	CF12-1VRAB	CF12-1VUURAB														13 430	19 700	11 270	6 000				
16	CF16AB	CF16UUAB	CF16RAB	CF16UURAB	35	18	16	M16×1.5	17	52	32.5	8	0.8	3	6	0.6	24	12 050	18 330	18 330	10 000	11 200	3 140	58	170
	CF16VAB	CF16VUUAB	CF16VRAB	CF16VUURAB														20 680	37 630	19 800	4 500				
18	CF18AB	CF18UUAB	CF18RAB	CF18UURAB	40	20	18	M18×1.5	19	58	36.5	8	0.8	3	6	1	26	14 700	25 200	25 200	8 500	14 400	3 720	87	250
	CF18VAB	CF18VUUAB	CF18VRAB	CF18VUURAB														25 280	51 350	26 560	3 500				
20	CF20AB	CF20UUAB	CF20RAB	CF20UURAB	52	24	20	M20×1.5	21	66	40.5	9	0.8	4	8	1	36	20 680	34 600	32 140	7 000	23 200	8 230	120	460
	CF20VAB	CF20VUUAB	CF20VRAB	CF20VUURAB														33 120	64 480	32 140	3 500				

CF..AB TYPE has oil holes (grease nipple) which are prepared in the stud head and thread side, also an oil hole is prepared in the outer surface of stud.

* Without seals, suitable for grease lubrication. In case of oil lubrication, up to 130% of this value shall be permissible, and 70% of this value shall apply for types with seals.

OUTER RINGS TOLERANCE (μm)

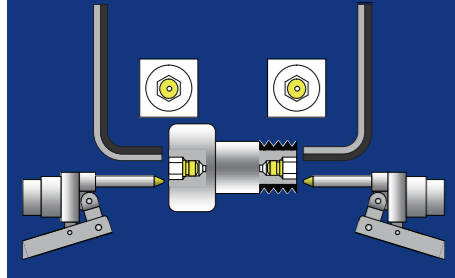
TYPE	Cylindrical outer ring	Crowned outer ring
CF10,CF10-1,CF12	0/-9	0/-50
CF12-1,CF16,CF18,CF20-1	0/-11	0/-50
CF20,CF24,CF24-1,CF30	0/-13	0/-50
CF30-1,CF30-2	0/-15	0/-50

ACCESSORIES

TYPE	Grease Nipple	NUT
All types	Installed	Attached

CAM FOLLOWERS

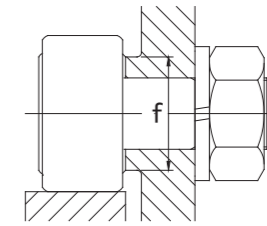
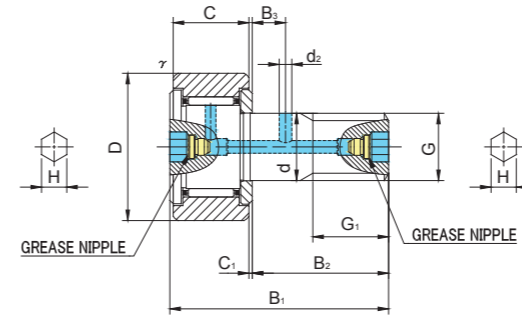
HEXAGON SOCKET ON BOTH SIDES
GREASE NIPPLE INSTALLED



CF..AB



CF..VAB



CF..AB TYPE

Prepacked Grease

Stud diameter (mm)	h7 tolerance	Designation				Dimensions (mm)												Basic dynamic load rating Cr N	Basic static load rating Cor N	Largest permissible load N	Limiting speed * rpm	Track load capacity		Max tightening torque N·m	Mass g (approx)	
		Cylindrical outer ring		Crowned outer ring R1000(CF20 ≤)		D	C	d	G	G1	B1	B2	B3	C1	d2	H	rs min					f min	Cylindrical outer ring N			Crowned outer ring N
		Without seals	With seals	Without seals	With seals																					
20	0 -0.021	CF20-1AB	CF20-1UUAB	CF20-1RAB	CF20-1UURAB	47	24	20	M20×1.5	21	66	40.5	9	0.8	4	8	1	36	20 680	34 600	32 140	7 000	21 000	7 150	120	385
		CF20-1VAB	CF20-1VUUAB	CF20-1VRAB	CF20-1VUURAB														33 120	64 480	32 140					
24	0 -0.021	CF24AB	CF24UUAB	CF24RAB	CF24UURAB	62	29	24	M24×1.5	25	80	49.5	11	0.8	4	8	1	40	30 480	52 630	49 500	6 500	34 200	10 500	220	815
		CF24VAB	CF24VUUAB	CF24VRAB	CF24VUURAB														46 550	92 020	49 500					
24	0 -0.021	CF24-1AB	CF24-1UUAB	CF24-1RAB	CF24-1UURAB	72	29	24	M24×1.5	25	80	49.5	11	0.8	4	8	1	40	30 480	52 630	49 500	6 500	39 800	12 900	220	1 140
		CF24-1VAB	CF24-1VUUAB	CF24-1VRAB	CF24-1VUURAB														46 550	92 020	49 500					
30	0 -0.021	CF30AB	CF30UUAB	CF30RAB	CF30UURAB	80	35	30	M30×1.5	32	100	63	15	1	4	8	1	46	45 370	85 060	73 700	5 000	52 600	14 900	450	1 870
		CF30VAB	CF30VUUAB	CF30VRAB	CF30VUURAB														67 620	144 060	73 700					
30	0 -0.021	CF30-1AB	CF30-1UUAB	CF30-1RAB	CF30-1UURAB	85	35	30	M30×1.5	32	100	63	15	1	4	8	1	46	45 370	85 060	73 700	5 000	56 000	16 100	450	2 030
		CF30-1VAB	CF30-1VUUAB	CF30-1VRAB	CF30-1VUURAB														67 620	144 060	73 700					
30	0 -0.021	CF30-2AB	CF30-2UUAB	CF30-2RAB	CF30-2UURAB	90	35	30	M30×1.5	32	100	63	15	1	4	8	1	46	45 370	85 060	73 700	5 000	59 300	17 300	450	2 220
		CF30-2VAB	CF30-2VUUAB	CF30-2VRAB	CF30-2VUURAB														67 620	144 060	73 700					

CF..AB TYPE has oil holes (grease nipple) which are prepared in the stud head and thread side, also an oil hole is prepared in the outer surface of stud.

* Without seals, suitable for grease lubrication. In case of oil lubrication, up to 130% of this value shall be permissible, and 70% of this value shall apply for types with seals.

OUTER RINGS TOLERANCE (μm)

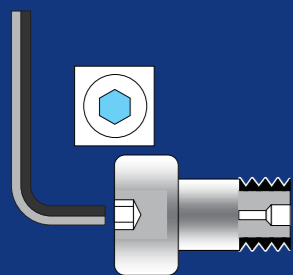
TYPE	Cylindrical outer ring	Crowned outer ring
CF10,CF10-1,CF12	0/-9	0/-50
CF12-1,CF16,CF18,CF20-1	0/-11	0/-50
CF20,CF24,CF24-1,CF30	0/-13	0/-50
CF30-1,CF30-2	0/-15	0/-50

ACCESSORIES

TYPE		
All types	Installed	Attached

CAM FOLLOWERS

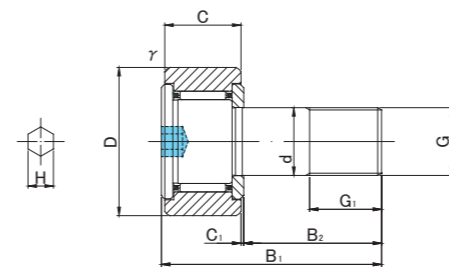
HEXAGON SOCKET ON STUD HEAD



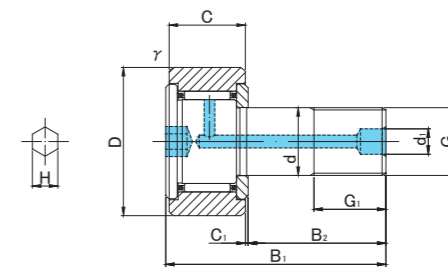
CF..A



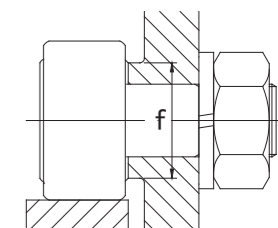
CF..VA



CF3(V)A~CF10-1(V)A



CF10(V)AK~CF10-1(V)AK



CF..A TYPE

Prepacked Grease

Stud diameter (mm)	h7 tolerance	Designation				Dimensions (mm)													Basic dynamic load rating Cr N	Basic static load rating Cor N	Largest permissible load N	Limiting speed * rpm	Track load capacity		Max tightening torque N·m	Mass g (approx)	
		Cylindrical outer ring		Crowned outer ring R250(≤CF5) R500(CF6~CF10)		D	C	d	G	G1	B1	B2	B3	C1	d1	d2	H	rs min					f min	Cylindrical outer ring N			Crowned outer ring N
		Without seals	With seals	Without seals	With seals																						
3	0 -0.010	CF 3A	CF 3UUA	CF 3RA	CF 3UURA	10	7	3	M3×0.5	5	17	9	—	0.5	—	—	2	0.2	6.8	1 470	1 180	360	47 000	1 370	370	0.4	4.5
		CF 3VA	CF 3VUUA	CF 3VRA	CF 3VUURA															2 800	2 500	360	18 800				
4	0 -0.012	CF 4A	CF 4UUA	CF 4RA	CF 4UURA	12	8	4	M4×0.7	6	20	11	—	0.5	—	—	2.5	0.3	8.6	2 060	2 050	780	37 000	1 760	470	1	7.5
		CF 4VA	CF 4VUUA	CF 4VRA	CF 4VUURA															4 000	4 300	780	14 800				
5	0 -0.012	CF 5A	CF 5UUA	CF 5RA	CF 5UURA	13	9	5	M5×0.8	7.5	23	13	—	0.5	—	—	3	0.3	9.7	3 140	2 770	1 420	29 000	2 250	530	2	10.5
		CF 5VA	CF 5VUUA	CF 5VRA	CF 5VUURA															5 100	5 500	1 420	11 600				
6	0 -0.012	CF 6A	CF 6UUA	CF 6RA	CF 6UURA	16	11	6	M6×1	8	28	16	—	0.6	—	—	3	0.3	11	3 630	3 630	2 110	25 000	3 430	1 080	3	18.5
		CF 6VA	CF 6VUUA	CF 6VRA	CF 6VUURA															6 960	8 530	2 110	12 000				
8	0 -0.015	CF 8A	CF 8UUA	CF 8RA	CF 8UURA	19	11	8	M8×1.25	10	32	20	—	0.6	—	—	4	0.3	13	4 310	4 710	4 710	20 000	4 020	1 370	8	28.5
		CF 8VA	CF 8VUUA	CF 8VRA	CF 8VUURA															8 130	11 170	4 710	9 000				
10	0 -0.015	CF10A	CF10UUA	CF10RA	CF10UURA	22	12	10	M10×1.25	12	36	23	—	0.6	—	—	5	0.3	15	5 390	6 860	6 860	17 000	4 700	1 670	15	45
		CF10VA	CF10VUUA	CF10VRA	CF10VUURA															9 510	14 500	7 450	7 500				
10	0 -0.015	CF10-1A	CF10-1UUA	CF10-1RA	CF10-1UURA	26	12	10	M10×1.25	12	36	23	—	0.6	—	—	5	0.3	15	5 390	6 860	6 860	17 000	5 490	2 060	15	60
		CF10-1VA	CF10-1VUUA	CF10-1VRA	CF10-1VUURA															9 510	14 500	7 450	7 500				
10	0 -0.015	CF10AK	CF10UUAK	CF10RAK	CF10UURAK	22	12	10	M10×1	12	36	23	—	0.6	4	—	5	0.3	15	5 390	6 860	6 860	17 000	4 700	1 670	15	45
		CF10VAK	CF10VUUAK	CF10VRK	CF10VUURAK															9 510	14 500	7 450	7 500				
10	0 -0.015	CF10-1AK	CF10-1UUAK	CF10-1RAK	CF10-1UURAK	26	12	10	M10×1	12	36	23	—	0.6	4	—	5	0.3	15	5 390	6 860	6 860	17 000	5 490	2 060	15	60
		CF10-1VAK	CF10-1VUUAK	CF10-1VRK	CF10-1VUURAK															9 510	14 500	7 450	7 500				

* Without seals, suitable for grease lubrication. In case of oil lubrication, up to 130% of this value shall be permissible, and 70% of this value shall apply for types with seals.

OUTER RINGS TOLERANCE (μm)

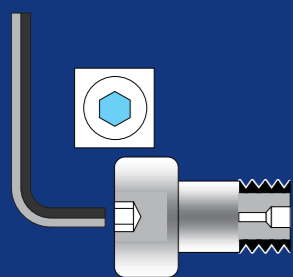
TYPE	Cylindrical outer ring	Crowned outer ring
CF3,CF4,CF5,CF6	0/-8	0/-50
CF8,CF10,CF10-1,CF12	0/-9	0/-50
CF12-1,CF16,CF18,CF20-1	0/-11	0/-50
CF20,CF24,CF24-1,CF30	0/-13	0/-50
CF30-1,CF30-2	0/-15	0/-50

ACCESSORIES

TYPE	STOP PLUG	RESIN PLUG	NUT
CF3/CF4/CF5/CF6/CF8/CF10/CF10-1	—	—	Attached
CF10K/CF10-1K	φ 4 Attached	φ 4 Attached	Attached
CF12/CF12-1/CF16/CF18	φ 6 Attached	φ 6 Attached	Attached
CF20/CF20-1/CF24/CF24-1/CF30/CF30-1/CF30-2	φ 8 Attached	φ 8 Attached	Attached

CAM FOLLOWERS

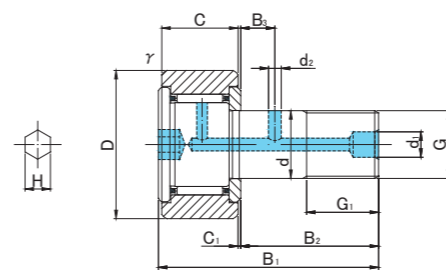
HEXAGON SOCKET ON STUD HEAD



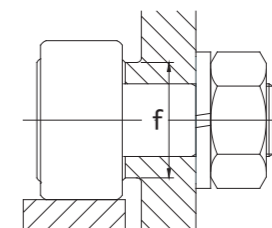
CF..A



CF..VA



CF12(V)A~CF30-2(V)A



CF..A TYPE

Prepacked Grease

Stud diameter (mm)	h7 tolerance	Designation				Dimensions (mm)														Basic dynamic load rating Cr N	Basic static load rating Cor N	Largest permissible load N	Limiting speed * rpm	Track load capacity		Max tightening torque N·m	Mass g (approx)
		Cylindrical outer ring		Crowned outer ring R500(CF12 ~ CF18) R1000(CF20 ≤)		D	C	d	G	G1	B1	B2	B3	C1	d1	d2	H	rs min	f min					Cylindrical outer ring N	Crowned outer ring N		
		Without seals	With seals	Without seals	With seals																						
12	0 -0.018	CF12A	CF12UUA	CF12RA	CF12UURA	30	14	12	M12×1.5	13	40	25	6	0.6	6	3	6	0.6	20	7 940	9 800	9 800	14 000	7 060	2 450	22	95
		CF12VA	CF12VUUA	CF12VRA	CF12VUURA															13 430	19 700	11 270	6 000				
12	0 -0.018	CF12-1A	CF12-1UUA	CF12-1RA	CF12-1UURA	32	14	12	M12×1.5	13	40	25	6	0.6	6	3	6	0.6	20	7 940	9 800	9 800	14 000	7 450	2 740	22	105
		CF12-1VA	CF12-1VUUA	CF12-1VRA	CF12-1VUURA															13 430	19 700	11 270	6 000				
16	0 -0.018	CF16A	CF16UUA	CF16RA	CF16UURA	35	18	16	M16×1.5	17	52	32.5	8	0.8	6	3	6	0.6	24	12 050	18 330	18 330	10 000	11 200	3 140	58	170
		CF16VA	CF16VUUA	CF16VRA	CF16VUURA															20 680	37 630	19 800	4 500				
18	0 -0.018	CF18A	CF18UUA	CF18RA	CF18UURA	40	20	18	M18×1.5	19	58	36.5	8	0.8	6	3	6	1	26	14 700	25 200	25 200	8 500	14 400	3 720	87	250
		CF18VA	CF18VUUA	CF18VRA	CF18VUURA															25 280	51 350	26 560	3 500				
20	0 -0.021	CF20A	CF20UUA	CF20RA	CF20UURA	52	24	20	M20×1.5	21	66	40.5	9	0.8	8	4	8	1	36	20 680	34 600	32 140	7 000	23 200	8 230	120	460
		CF20VA	CF20VUUA	CF20VRA	CF20VUURA															33 120	64 480	32 140	3 500				
20	0 -0.021	CF20-1A	CF20-1UUA	CF20-1RA	CF20-1UURA	47	24	20	M20×1.5	21	66	40.5	9	0.8	8	4	8	1	36	20 680	34 600	32 140	7 000	21 000	7 150	120	385
		CF20-1VA	CF20-1VUUA	CF20-1VRA	CF20-1VUURA															33 120	64 480	32 140	3 500				
24	0 -0.021	CF24A	CF24UUA	CF24RA	CF24UURA	62	29	24	M24×1.5	25	80	49.5	11	0.8	8	4	8	1	40	30 480	52 630	49 500	6 500	34 200	10 500	220	815
		CF24VA	CF24VUUA	CF24VRA	CF24VUURA															46 550	92 020	49 500	3 000				
24	0 -0.021	CF24-1A	CF24-1UUA	CF24-1RA	CF24-1UURA	72	29	24	M24×1.5	25	80	49.5	11	0.8	8	4	8	1	40	30 480	52 630	49 500	6 500	39 800	12 900	220	1 140
		CF24-1VA	CF24-1VUUA	CF24-1VRA	CF24-1VUURA															46 550	92 020	49 500	3 000				
30	0 -0.021	CF30A	CF30UUA	CF30RA	CF30UURA	80	35	30	M30×1.5	32	100	63	15	1	8	4	8	1	46	45 370	85 060	73 700	5 000	52 600	14 900	450	1 870
		CF30VA	CF30VUUA	CF30VRA	CF30VUURA															67 620	144 060	73 700	2 200				
30	0 -0.021	CF30-1A	CF30-1UUA	CF30-1RA	CF30-1UURA	85	35	30	M30×1.5	32	100	63	15	1	8	4	8	1	46	45 370	85 060	73 700	5 000	56 000	16 100	450	2 030
		CF30-1VA	CF30-1VUUA	CF30-1VRA	CF30-1VUURA															67 620	144 060	73 700	2 200				
30	0 -0.021	CF30-2A	CF30-2UUA	CF30-2RA	CF30-2UURA	90	35	30	M30×1.5	32	100	63	15	1	8	4	8	1	46	45 370	85 060	73 700	5 000	59 300	17 300	450	2 220
		CF30-2VA	CF30-2VUUA	CF30-2VRA	CF30-2VUURA															67 620	144 060	73 700	2 200				

* Without seals, suitable for grease lubrication. In case of oil lubrication, up to 130% of this value shall be permissible, and 70% of this value shall apply for types with seals.

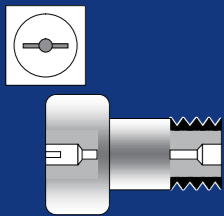
OUTER RINGS TOLERANCE (μm)

TYPE	Cylindrical outer ring	Crowned outer ring
CF3,CF4,CF5,CF6	0/-8	0/-50
CF8,CF10,CF10-1,CF12	0/-9	0/-50
CF12-1,CF16,CF18,CF20-1	0/-11	0/-50
CF20,CF24,CF24-1,CF30	0/-13	0/-50
CF30-1,CF30-2	0/-15	0/-50

ACCESSORIES

TYPE	STOP PLUG	RESIN PLUG	NUT
CF3/CF4/CF5/CF6/CF8/CF10/CF10-1	—	—	Attached
CF10K/CF10-1K	φ 4 Attached	φ 4 Attached	Attached
CF12/CF12-1/CF16/CF18	φ 6 Attached	φ 6 Attached	Attached
CF20/CF20-1/CF24/CF24-1/CF30/CF30-1/CF30-2	φ 8 Attached	φ 8 Attached	Attached

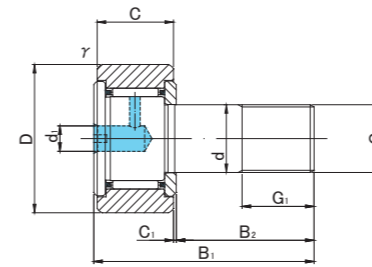
CAM FOLLOWERS SCREWDRIVER SLOT HEAD



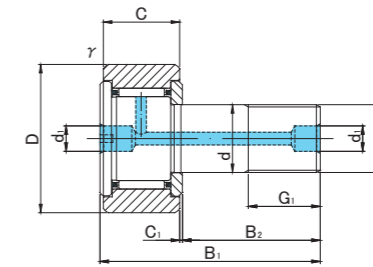
CF



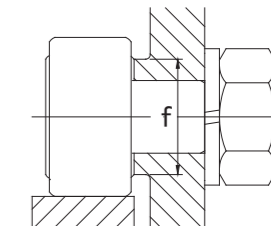
CF.V



CF5(V)~CF10-1(V)



CF10(V)K~CF10-1(V)K



CF TYPE

Prepacked Grease

Stud diameter (mm)	Designation	Dimensions (mm)															Basic dynamic load rating	Basic static load rating	Largest permissible load	Limiting speed *	Track load capacity		Max tightening torque	Mass	
		Cylindrical outer ring				Crowned outer ring R250(CF5) R500(CF6 ~ CF10-1)				Other dimensions											Cylindrical outer ring N	Crowned outer ring N			N-m
h7 tolerance	Without seals	With seals	Without seals	With seals	D	C	d	G	G1	B1	B2	B3	C1	d1	d2	r _s min	f min	Cr N	Cor N	N	rpm	Cylindrical outer ring N	Crowned outer ring N	N-m	g (approx)
5	CF 5	CF 5UU	CF 5R	CF 5UUR	13	9	5	M5x0.8	7.5	23	13	—	0.5	3.1	—	0.3	9.7	3 140	2 770	1 420	29 000	2 250	530	2	10.5
	CF 5V	CF 5VUU	CF 5VR	CF 5VUUR														5 100	5 500	1 420	11 600				
6	CF 6	CF 6UU	CF 6R	CF 6UUR	16	11	6	M6x1	8	28	16	—	0.6	4	—	0.3	11	3 630	3 630	2 110	25 000	3 430	1 080	3	18.5
	CF 6V	CF 6VUU	CF 6VR	CF 6VUUR														6 960	8 530	2 110	12 000				
8	CF 8	CF 8UU	CF 8R	CF 8UUR	19	11	8	M8x1.25	10	32	20	—	0.6	4	—	0.3	13	4 310	4 710	4 710	20 000	4 020	1 370	8	28.5
	CF 8V	CF 8VUU	CF 8VR	CF 8VUUR														8 130	11 170	4 710	9 000				
10	CF10	CF10UU	CF10R	CF10UUR	22	12	10	M10x1.25	12	36	23	—	0.6	4	—	0.3	15	5 390	6 860	6 860	17 000	4 700	1 670	15	45
	CF10V	CF10VUU	CF10VR	CF10VUUR														9 510	14 500	7 450	7 500				
10	CF10-1	CF10-1UU	CF10-1R	CF10-1UUR	26	12	10	M10x1.25	12	36	23	—	0.6	4	—	0.3	15	5 390	6 860	6 860	17 000	5 490	2 060	15	60
	CF10-1V	CF10-1VUU	CF10-1VR	CF10-1VUUR														9 510	14 500	7 450	7 500				
10	CF10K	CF10UUK	CF10RK	CF10UURK	22	12	10	M10x1	12	36	23	—	0.6	4	—	0.3	15	5 390	6 860	6 860	17 000	4 700	1 670	15	45
	CF10VK	CF10VUUK	CF10VRK	CF10VUURK														9 510	14 500	7 450	7 500				
10	CF10-1K	CF10-1UUK	CF10-1RK	CF10-1UURK	26	12	10	M10x1	12	36	23	—	0.6	4	—	0.3	15	5 390	6 860	6 860	17 000	5 490	2 060	15	60
	CF10-1VK	CF10-1VUUK	CF10-1VRK	CF10-1VUURK														9 510	14 500	7 450	7 500				

* Without seals, suitable for grease lubrication. In case of oil lubrication, up to 130% of this value shall be permissible, and 70% of this value shall apply for types with seals.

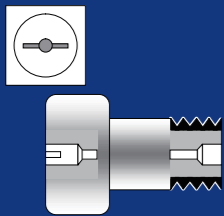
OUTER RINGS TOLERANCE

TYPE	Cylindrical outer ring	Crowned outer ring
CF5,CF6	0/-8	0/-50
CF8,CF10,CF10-1,CF12	0/-9	0/-50
CF12-1,CF16,CF18,CF20-1	0/-11	0/-50
CF20,CF24,CF24-1,CF30	0/-13	0/-50
CF30-1,CF30-2	0/-15	0/-50

ACCESSORIES

TYPE	STOP PLUG	RESIN PLUG	NUT
CF5	—	—	Attached
CF6/CF8/CF10/CF10-1	—	φ 4 Attached	Attached
CF12/CF12-1/CF16/CF18	φ 6 Attached	φ 6 Attached	Attached
CF20/CF20-1/CF24/CF24-1/CF30/CF30-1/CF30-2	φ 8 Attached	φ 8 Attached	Attached

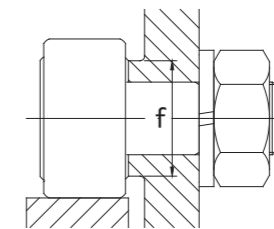
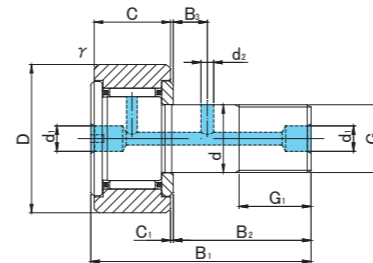
CAM FOLLOWERS SCREWDRIVER SLOT HEAD



CF



CF.V



CF TYPE

Prepacked Grease

Stud diameter (mm)	h7 tolerance	Designation				Dimensions (mm)															Basic dynamic load rating	Basic static load rating	Largest permissible load	Limiting speed *	Track load capacity		Max tightening torque	Mass				
		Cylindrical outer ring		Crowned outer ring R500(CF12 ~ CF18) R1000(CF20 ≤)		D	C	d	G	G1	B1	B2	B3	C1	d1	d2	r _s min	f min	Cr N	Cor N					N	rpm			Cylindrical outer ring N	Crowned outer ring N	N-m	g (approx)
		Without seals	With seals	Without seals	With seals																											
12	0 -0.018	CF12	CF12UU	CF12R	CF12UUR	30	14	12	M12×1.5	13	40	25		6	0.6	6	3	0.6	20	7 940	9 800	9 800	14 000	7 060	2 450	22	95					
		CF12V	CF12VUU	CF12VR	CF12VUUR															13 430	19 700	11 270	6 000									
12	0 -0.018	CF12-1	CF12-1UU	CF12-1R	CF12-1UUR	32	14	12	M12×1.5	13	40	25		6	0.6	6	3	0.6	20	7 940	9 800	9 800	14 000	7 450	2 740	22	105					
		CF12-1V	CF12-1VUU	CF12-1VR	CF12-1VUUR															13 430	19 700	11 270	6 000									
16	0 -0.018	CF16	CF16UU	CF16R	CF16UUR	35	18	16	M16×1.5	17	52	32.5		8	0.8	6	3	0.6	24	12 050	18 330	18 330	10 000	11 200	3 140	58	170					
		CF16V	CF16VUU	CF16VR	CF16VUUR															20 680	37 630	19 800	4 500									
18	0 -0.018	CF18	CF18UU	CF18R	CF18UUR	40	20	18	M18×1.5	19	58	36.5		8	0.8	6	3	1	26	14 700	25 200	25 200	8 500	14 400	3 720	87	250					
		CF18V	CF18VUU	CF18VR	CF18VUUR															25 280	51 350	26 560	3 500									
20	0 -0.021	CF20	CF20UU	CF20R	CF20UUR	52	24	20	M20×1.5	21	66	40.5		9	0.8	8	4	1	36	20 680	34 600	32 140	7 000	23 200	8 230	120	460					
		CF20V	CF20VUU	CF20VR	CF20VUUR															33 120	64 480	32 140	3 500									
20	0 -0.021	CF20-1	CF20-1UU	CF20-1R	CF20-1UUR	47	24	20	M20×1.5	21	66	40.5		9	0.8	8	4	1	36	20 680	34 600	32 140	7 000	21 000	7 150	120	385					
		CF20-1V	CF20-1VUU	CF20-1VR	CF20-1VUUR															33 120	64 480	32 140	3 500									
24	0 -0.021	CF24	CF24UU	CF24R	CF24UUR	62	29	24	M24×1.5	25	80	49.5		11	0.8	8	4	1	40	30 480	52 630	49 500	6 500	34 200	10 500	220	815					
		CF24V	CF24VUU	CF24VR	CF24VUUR															46 550	92 020	49 500	3 000									
24	0 -0.021	CF24-1	CF24-1UU	CF24-1R	CF24-1UUR	72	29	24	M24×1.5	25	80	49.5		11	0.8	8	4	1	40	30 480	52 630	49 500	6 500	39 800	12 900	220	1 140					
		CF24-1V	CF24-1VUU	CF24-1VR	CF24-1VUUR															46 550	92 020	49 500	3 000									
30	0 -0.021	CF30	CF30UU	CF30R	CF30UUR	80	35	30	M30×1.5	32	100	63		15	1	8	4	1	46	45 370	85 060	73 700	5 000	52 600	14 900	450	1 870					
		CF30V	CF30VUU	CF30VR	CF30VUUR															67 620	144 060	73 700	2 200									
30	0 -0.021	CF30-1	CF30-1UU	CF30-1R	CF30-1UUR	85	35	30	M30×1.5	32	100	63		15	1	8	4	1	46	45 370	85 060	73 700	5 000	56 000	16 100	450	2 030					
		CF30-1V	CF30-1VUU	CF30-1VR	CF30-1VUUR															67 620	144 060	73 700	2 200									
30	0 -0.021	CF30-2	CF30-2UU	CF30-2R	CF30-2UUR	90	35	30	M30×1.5	32	100	63		15	1	8	4	1	46	45 370	85 060	73 700	5 000	59 300	17 300	450	2 220					
		CF30-2V	CF30-2VUU	CF30-2VR	CF30-2VUUR															67 620	144 060	73 700	2 200									

* Without seals, suitable for grease lubrication. In case of oil lubrication, up to 130% of this value shall be permissible, and 70% of this value shall apply for types with seals.

OUTER RINGS TOLERANCE

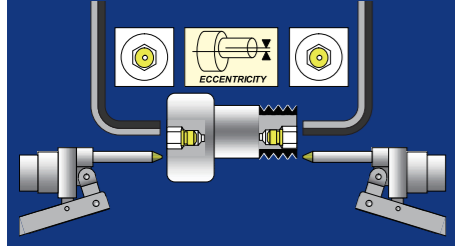
TYPE	Cylindrical outer ring	Crowned outer ring
CF5,CF6	0/-8	0/-50
CF8,CF10,CF10-1,CF12	0/-9	0/-50
CF12-1,CF16,CF18,CF20-1	0/-11	0/-50
CF20,CF24,CF24-1,CF30	0/-13	0/-50
CF30-1,CF30-2	0/-15	0/-50

ACCESSORIES

TYPE	STOP PLUG	RESIN PLUG	NUT
CF5	—	—	Attached
CF6/CF8/CF10/CF10-1	—	φ 4 Attached	Attached
CF12/CF12-1/CF16/CF18	φ 6 Attached	φ 6 Attached	Attached
CF20/CF20-1/CF24/CF24-1/CF30/CF30-1/CF30-2	φ 8 Attached	φ 8 Attached	Attached

CAM FOLLOWERS

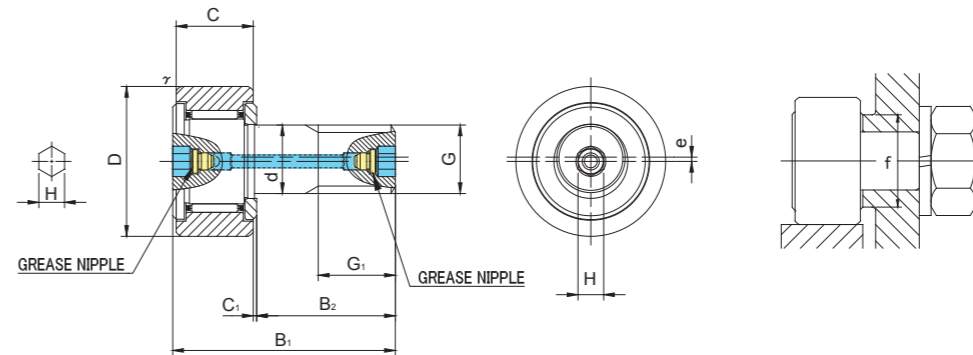
SOLID ECCENTRIC TYPE
HEXAGON SOCKET ON BOTH SIDES
GREASE NIPPLE INSTALLED



CFH..AB



CFH..VAB



CFH..AB TYPE

Prepacked Grease

Stud diameter (mm)	h7 tolerance	Designation				Dimensions (mm)												Basic dynamic load rating	Basic static load rating	Largest permissible load	Limiting speed *	Track load capacity		Max tightening torque	Mass
		Cylindrical outer ring		Crowned outer ring R500(CF10 ~ CF18) R1000(CF20 ≤)		D	C	d	G	G1	B1	B2	C1	H	r _s min	e	f min					Cr N	Cor N		
12	0 -0.018	CFH12AB	CFH12UUAB	CFH12RAB	CFH12UURAB	30	14	12	M12×1.5	13	40	25	0.6	6	0.6	0.4	20	7 940	9 800	9 800	14 000	7 060	2 450	22	95
		CFH12VAB	CFH12VUUAB	CFH12VRAB	CFH12VUURAB													13 430	19 700	11 270	6 000				
12	0 -0.018	CFH12-1AB	CFH12-1UUAB	CFH12-1RAB	CFH12-1UURAB	32	14	12	M12×1.5	13	40	25	0.6	6	0.6	0.4	20	7 940	9 800	9 800	14 000	7 450	2 740	22	105
		CFH12-1VAB	CFH12-1VUUAB	CFH12-1VRAB	CFH12-1VUURAB													13 430	19 700	11 270	6 000				
16	0 -0.018	CFH16AB	CFH16UUAB	CFH16RAB	CFH16UURAB	35	18	16	M16×1.5	17	52	32.5	0.8	6	0.6	0.5	24	12 050	18 330	18 330	10 000	11 200	3 140	58	170
		CFH16VAB	CFH16VUUAB	CFH16VRAB	CFH16VUURAB													20 680	37 630	19 800	4 500				
18	0 -0.018	CFH18AB	CFH18UUAB	CFH18RAB	CFH18UURAB	40	20	18	M18×1.5	19	58	36.5	0.8	6	1	0.6	26	14 700	25 200	25 200	8 500	14 400	3 720	87	250
		CFH18VAB	CFH18VUUAB	CFH18VRAB	CFH18VUURAB													25 280	51 350	26 560	3 500				
20	0 -0.021	CFH20AB	CFH20UUAB	CFH20RAB	CFH20UURAB	52	24	20	M20×1.5	21	66	40.5	0.8	8	1	0.7	36	20 680	34 600	32 140	7 000	23 200	8 230	120	460
		CFH20VAB	CFH20VUUAB	CFH20VRAB	CFH20VUURAB													33 120	64 480	32 140	3 500				
20	0 -0.021	CFH20-1AB	CFH20-1UUAB	CFH20-1RAB	CFH20-1UURAB	47	24	20	M20×1.5	21	66	40.5	0.8	8	1	0.7	36	20 680	34 600	32 140	7 000	21 000	7 150	120	385
		CFH20-1VAB	CFH20-1VUUAB	CFH20-1VRAB	CFH20-1VUURAB													33 120	64 480	32 140	3 500				

CFH..AB TYPE has oil holes (grease nipple) which are prepared in the stud head and thread side, also an oil hole is prepared outer surface of stud.

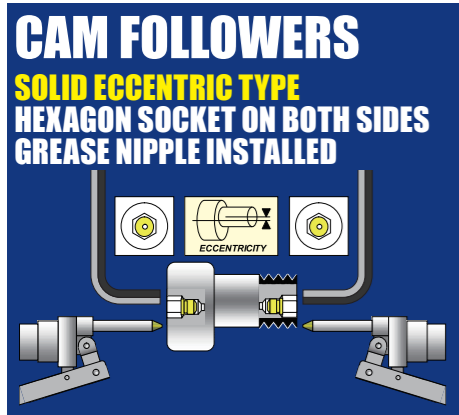
* Without seals, suitable for grease lubrication. In case of oil lubrication, up to 130% of this value shall be permissible, and 70% of this value shall apply for types with seals.

OUTER RINGS TOLERANCE (μm)

TYPE	Cylindrical outer ring	Crowned outer ring
CF12	0/-9	0/-50
CF12-1,CF16,CF18,CF20-1	0/-11	0/-50
CF20,CF24,CF24-1,CF30	0/-13	0/-50
CF30-1,CF30-2	0/-15	0/-50

ACCESSORIES

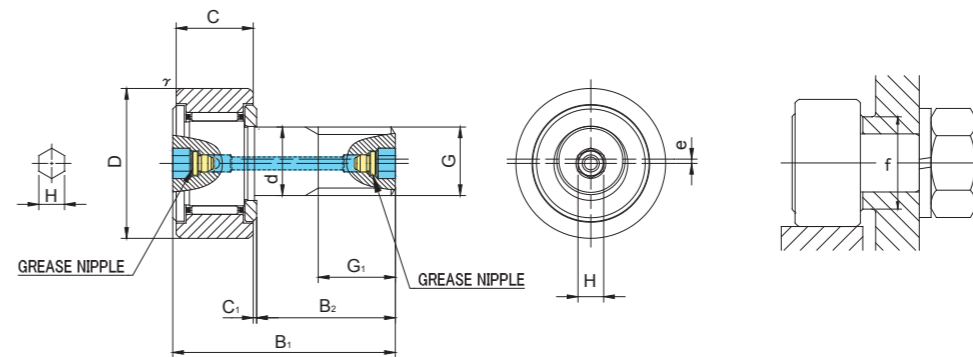
TYPE	Grease Nipple	NUT
All types	Installed	Attached



CFH..AB



CFH..VAB



CFH..AB TYPE

Prepacked Grease

Stud diameter (mm)	h7 tolerance	Designation				Dimensions (mm)												Basic dynamic load rating	Basic static load rating	Largest permissible load	Limiting speed *	Track load capacity		Max tightening torque	Mass
		Cylindrical outer ring		Crowned outer ring R1000(CF24 ≤)		D	C	d	G	G1	B1	B2	C1	H	r _s min	e	f min					Cr N	Cor N		
24	0 -0.021	CFH24AB	CFH24UUAB	CFH24RAB	CFH24UURAB	62	29	24	M24×1.5	25	80	49.5	0.8	8	1	0.8	40	30 480	52 630	49 500	6 500	34 200	10 500	220	815
		CFH24VAB	CFH24VUUAB	CFH24VRAB	CFH24VUURAB													46 550	92 020	49 500	3 000				
24	0 -0.021	CFH24-1AB	CFH24-1UUAB	CFH24-1RAB	CFH24-1UURAB	72	29	24	M24×1.5	25	80	49.5	0.8	8	1	0.8	40	30 480	52 630	49 500	6 500	39 800	12 900	220	1 140
		CFH24-1VAB	CFH24-1VUUAB	CFH24-1VRAB	CFH24-1VUURAB													46 550	92 020	49 500	3 000				
30	0 -0.021	CFH30AB	CFH30UUAB	CFH30RAB	CFH30UURAB	80	35	30	M30×1.5	32	100	63	1	8	1	1	46	45 370	85 060	73 700	5 000	52 600	14 900	450	1 870
		CFH30VAB	CFH30VUUAB	CFH30VRAB	CFH30VUURAB													67 620	144 060	73 700	2 200				
30	0 -0.021	CFH30-1AB	CFH30-1UUAB	CFH30-1RAB	CFH30-1UURAB	85	35	30	M30×1.5	32	100	63	1	8	1	1	46	45 370	85 060	73 700	5 000	56 000	16 100	450	2 030
		CFH30-1VAB	CFH30-1VUUAB	CFH30-1VRAB	CFH30-1VUURAB													67 620	144 060	73 700	2 200				
30	0 -0.021	CFH30-2AB	CFH30-2UUAB	CFH30-2RAB	CFH30-2UURAB	90	35	30	M30×1.5	32	100	63	1	8	1	1	46	45 370	85 060	73 700	5 000	59 300	17 300	450	2 220
		CFH30-2VAB	CFH30-2VUUAB	CFH30-2VRAB	CFH30-2VUURAB													67 620	144 060	73 700	2 200				

CFH..AB TYPE has oil holes (grease nipple) which are prepared in the stud head and thread side, also an oil hole is prepared outer surface of stud.

* Without seals, suitable for grease lubrication. In case of oil lubrication, up to 130% of this value shall be permissible, and 70% of this value shall apply for types with seals.

OUTER RINGS TOLERANCE (μm)

TYPE	Cylindrical outer ring	Crowned outer ring
CF12	0/-9	0/-50
CF12-1,CF16,CF18,CF20-1	0/-11	0/-50
CF20,CF24,CF24-1,CF30	0/-13	0/-50
CF30-1,CF30-2	0/-15	0/-50

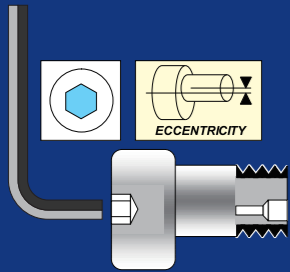
ACCESSORIES

TYPE		
All types	Installed	Attached

CAM FOLLOWERS

SOLID ECCENTRIC TYPE

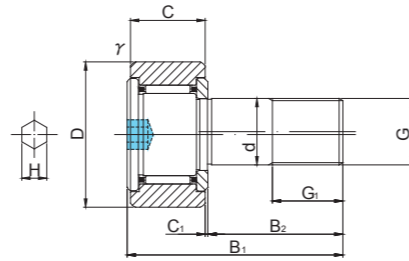
HEXAGON SOCKET ON STUD HEAD



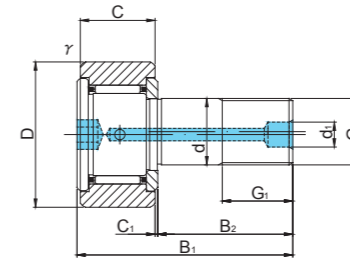
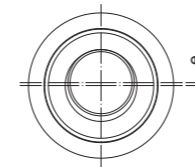
CFH..A



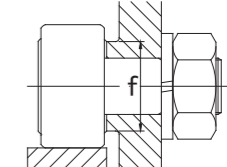
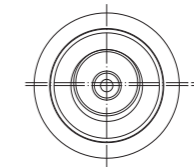
CFH..VA



CFH5(V)A~CFH10-1(V)A



CFH12(V)A~CFH12-1(V)A



CFH..A TYPE

Prepacked Grease

Stud diameter (mm)	h7 tolerance	Designation				Dimensions (mm)															Basic dynamic load rating Cr N	Basic static load rating Cor N	Largest permissible load N	Limiting speed * rpm	Track load capacity		Max tightening torque N·m	Mass g (approx)
		Cylindrical outer ring		Crowned outer ring R250(CF5) R500(CF6 ~ CF12-1)		D	C	d	G	G1	B1	B2	C1	d1	H	rs min	e	f min	Cylindrical outer ring N	Crowned outer ring N								
		Without seals	With seals	Without seals	With seals																							
5	0 -0.012	CFH 5A	CFH 5UUA	CFH 5RA	CFH 5UURA	13	9	5	M5×0.8	7.5	23	13	0.5	—	3	0.3	0.2	9.7	3 140	2 770	1 420	29 000	2 250	530	2	10.5		
		CFH 5VA	CFH 5VUUA	CFH 5VRA	CFH 5VUURA														5 100	5 500	1 420	11 600						
6	0 -0.012	CFH 6A	CFH 6UUA	CFH 6RA	CFH 6UURA	16	11	6	M6×1	8	28	16	0.6	—	3	0.3	0.25	11	3 630	3 630	2 110	25 000	3 430	1 080	3	18.5		
		CFH 6VA	CFH 6VUUA	CFH 6VRA	CFH 6VUURA														6 960	8 530	2 110	12 000						
8	0 -0.015	CFH 8A	CFH 8UUA	CFH 8RA	CFH 8UURA	19	11	8	M8×1.25	10	32	20	0.6	—	4	0.3	0.25	13	4 310	4 710	4 710	20 000	4 020	1 370	8	28.5		
		CFH 8VA	CFH 8VUUA	CFH 8VRA	CFH 8VUURA														8 130	11 170	4 710	9 000						
10	0 -0.015	CFH10A	CFH10UUA	CFH10RA	CFH10UURA	22	12	10	M10×1.25	12	36	23	0.6	—	5	0.3	0.3	15	5 390	6 860	6 860	17 000	4 700	1 670	15	45		
		CFH10VA	CFH10VUUA	CFH10VRA	CFH10VUURA														9 510	14 500	7 450	7 500						
10	0 -0.015	CFH10-1A	CFH10-1UUA	CFH10-1RA	CFH10-1UURA	26	12	10	M10×1.25	12	36	23	0.6	—	5	0.3	0.3	15	5 390	6 860	6 860	17 000	5 490	2 060	15	60		
		CFH10-1VA	CFH10-1VUUA	CFH10-1VRA	CFH10-1VUURA														9 510	14 500	7 450	7 500						
12	0 -0.018	CFH12A	CFH12UUA	CFH12RA	CFH12UURA	30	14	12	M12×1.5	13	40	25	0.6	6	6	0.6	0.4	20	7 940	9 800	9 800	14 000	7 060	2 450	22	95		
		CFH12VA	CFH12VUUA	CFH12VRA	CFH12VUURA														13 430	19 700	11 270	6 000						
12	0 -0.018	CFH12-1A	CFH12-1UUA	CFH12-1RA	CFH12-1UURA	32	14	12	M12×1.5	13	40	25	0.6	6	6	0.6	0.4	20	7 940	9 800	9 800	14 000	7 450	2 740	22	105		
		CFH12-1VA	CFH12-1VUUA	CFH12-1VRA	CFH12-1VUURA														13 430	19 700	11 270	6 000						

* Without seals, suitable for grease lubrication. In case of oil lubrication, up to 130% of this value shall be permissible, and 70% of this value shall apply for types with seals.

OUTER RINGS TOLERANCE (μm)

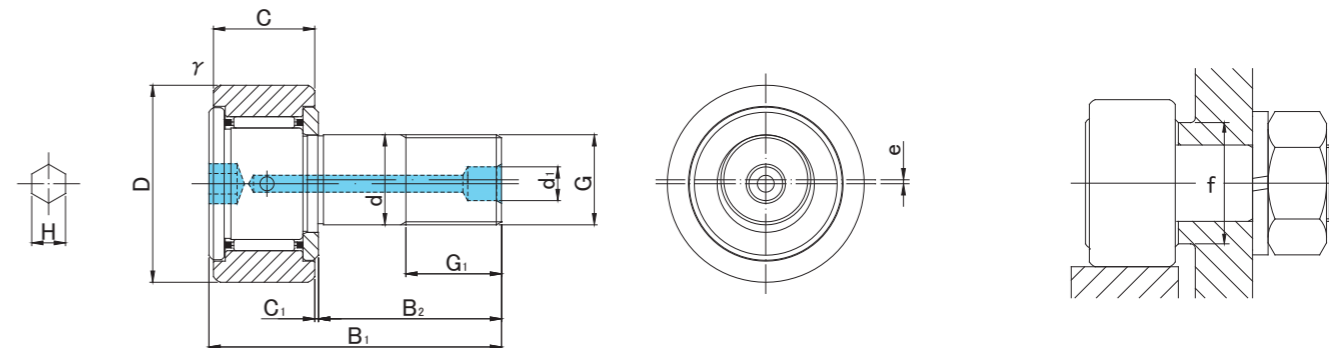
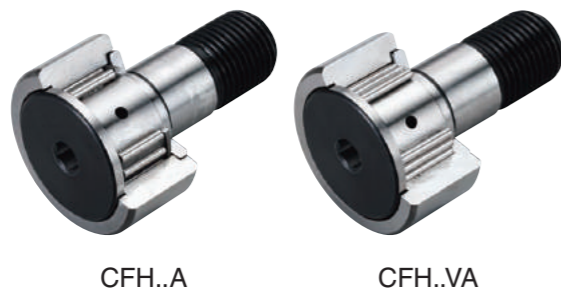
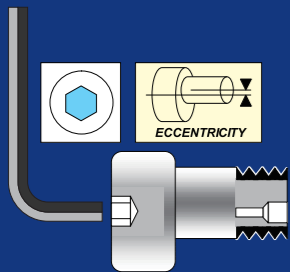
TYPE	Cylindrical outer ring	Crowned outer ring
CF5,CF6	0/-8	0/-50
CF8,CF10,CF10-1,CF12	0/-9	0/-50
CF12-1,CF16,CF18,CF20-1	0/-11	0/-50
CF20,CF24,CF24-1,CF30	0/-13	0/-50
CF30-1,CF30-2	0/-15	0/-50

ACCESSORIES

TYPE	STOP PLUG	RESIN PLUG	NUT
CF5	—	—	Attached
CF6/CF8/CF10/CF10-1	—	—	Attached
CF12/CF12-1/CF16/CF18	φ 6 Attached	φ 6 Attached	Attached
CF20/CF20-1/CF24/CF24-1/CF30/CF30-1/CF30-2	φ 8 Attached	φ 8 Attached	Attached

CAM FOLLOWERS

SOLID ECCENTRIC TYPE
HEXAGON SOCKET ON STUD HEAD



CFH..A TYPE

Prepacked Grease

Stud diameter (mm)	h7 tolerance	Designation				Dimensions (mm)													Basic dynamic load rating	Basic static load rating	Largest permissible load	Limiting speed *	Track load capacity		Max tightening torque	Mass
		Cylindrical outer ring		Crowned outer ring R250(CF5) R500(CF6~CF18) R1000(CF20 ≤)		D	C	d	G	G1	B1	B2	C1	d1	H	r _s min	e	f min					Cr N	Cor N		
16	0 -0.018	CFH16A	CFH16UUA	CFH16RA	CFH16UURA	35	18	16	M16x1.5	17	52	32.5	0.8	6	6	0.6	0.5	24	12 050	18 330	18 330	10 000	11 200	3 140	58	170
		CFH16VA	CFH16VUUA	CFH16VRA	CFH16VUURA														20 680	37 630	19 800	4 500				
18	0 -0.018	CFH18A	CFH18UUA	CFH18RA	CFH18UURA	40	20	18	M18x1.5	19	58	36.5	0.8	6	6	1	0.6	26	14 700	25 200	25 200	8 500	14 400	3 720	87	250
		CFH18VA	CFH18VUUA	CFH18VRA	CFH18VUURA														25 280	51 350	26 560	3 500				
20	0 -0.021	CFH20A	CFH20UUA	CFH20RA	CFH20UURA	52	24	20	M20x1.5	21	66	40.5	0.8	8	8	1	0.7	36	20 680	34 600	32 140	7 000	23 200	8 230	120	460
		CFH20VA	CFH20VUUA	CFH20VRA	CFH20VUURA														33 120	64 480	32 140	3 500				
20	0 -0.021	CFH20-1A	CFH20-1UUA	CFH20-1RA	CFH20-1UURA	47	24	20	M20x1.5	21	66	40.5	0.8	8	8	1	0.7	36	20 680	34 600	32 140	7 000	21 000	7 150	120	385
		CFH20-1VA	CFH20-1VUUA	CFH20-1VRA	CFH20-1VUURA														33 120	64 480	32 140	3 500				
24	0 -0.021	CFH24A	CFH24UUA	CFH24RA	CFH24UURA	62	29	24	M24x1.5	25	80	49.5	0.8	8	8	1	0.8	40	30 480	52 630	49 500	6 500	34 200	10 500	220	815
		CFH24VA	CFH24VUUA	CFH24VRA	CFH24VUURA														46 550	92 020	49 500	3 000				
24	0 -0.021	CFH24-1A	CFH24-1UUA	CFH24-1RA	CFH24-1UURA	72	29	24	M24x1.5	25	80	49.5	0.8	8	8	1	0.8	40	30 480	52 630	49 500	6 500	39 800	12 900	220	1 140
		CFH24-1VA	CFH24-1VUUA	CFH24-1VRA	CFH24-1VUURA														46 550	92 020	49 500	3 000				
30	0 -0.021	CFH30A	CFH30UUA	CFH30RA	CFH30UURA	80	35	30	M30x1.5	32	100	63	1	8	8	1	1	46	45 370	85 060	73 700	5 000	52 600	14 900	450	1 870
		CFH30VA	CFH30VUUA	CFH30VRA	CFH30VUURA														67 620	144 060	73 700	2 200				
30	0 -0.021	CFH30-1A	CFH30-1UUA	CFH30-1RA	CFH30-1UURA	85	35	30	M30x1.5	32	100	63	1	8	8	1	1	46	45 370	85 060	73 700	5 000	56 000	16 100	450	2 030
		CFH30-1VA	CFH30-1VUUA	CFH30-1VRA	CFH30-1VUURA														67 620	144 060	73 700	2 200				
30	0 -0.021	CFH30-2A	CFH30-2UUA	CFH30-2RA	CFH30-2UURA	90	35	30	M30x1.5	32	100	63	1	8	8	1	1	46	45 370	85 060	73 700	5 000	59 300	17 300	450	2 220
		CFH30-2VA	CFH30-2VUUA	CFH30-2VRA	CFH30-2VUURA														67 620	144 060	73 700	2 200				

* Without seals, suitable for grease lubrication. In case of oil lubrication, up to 130% of this value shall be permissible, and 70% of this value shall apply for types with seals.

OUTER RINGS TOLERANCE (μm)

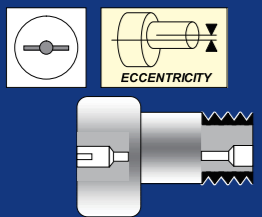
TYPE	Cylindrical outer ring	Crowned outer ring
CF5,CF6	0/-8	0/-50
CF8,CF10,CF10-1,CF12	0/-9	0/-50
CF12-1,CF16,CF18,CF20-1	0/-11	0/-50
CF20,CF24,CF24-1,CF30	0/-13	0/-50
CF30-1,CF30-2	0/-15	0/-50

ACCESSORIES

TYPE	STOP PLUG	RESIN PLUG	NUT
CF5	—	—	Attached
CF6/CF8/CF10/CF10-1	—	—	Attached
CF12/CF12-1/CF16/CF18	φ 6 Attached	φ 6 Attached	Attached
CF20/CF20-1/CF24/CF24-1/CF30/CF30-1/CF30-2	φ 8 Attached	φ 8 Attached	Attached

CAM FOLLOWERS

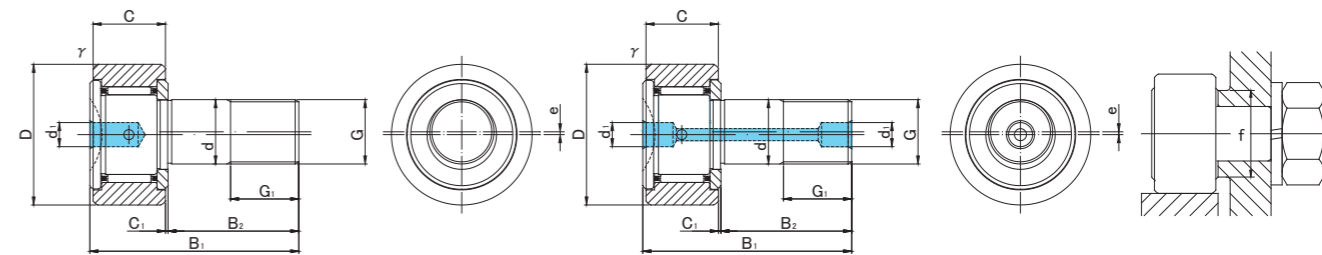
SOLID ECCENTRIC TYPE
SCREWDRIVER SLOT HEAD



CFH



CFH.V



CFH5(V)~CFH10-1(V)

CFH12(V)~CFH16(V)

CFH TYPE

Prepacked Grease

Stud diameter (mm)	h7 tolerance	Designation				Dimensions (mm)												Basic dynamic load rating	Basic static load rating	Largest permissible load	Limiting speed *	Track load capacity		Max tightening torque	Mass
		Cylindrical outer ring		Crowned outer ring R250(CF5) R500 (CF6 ~ CF16)		D	C	d	G	G1	B1	B2	C1	d1	r _s min	e	f min					Cr N	Cor N		
5	0 -0.012	CFH 5	CFH 5UU	CFH 5R	CFH 5UUR	13	9	5	M5x0.8	7.5	23	13	0.5	3.1	0.3	0.2	9.7	3 140	2 770	1 420	29 000	2 250	530	2	10.5
		CFH 5V	CFH 5VUU	CFH 5VR	CFH 5VUUR													5,100	5,500	1 420	11,600				
6	0 -0.012	CFH 6	CFH 6UU	CFH 6R	CFH 6UUR	16	11	6	M6x1	8	28	16	0.6	4	0.3	0.25	11	3 630	3 630	2 110	25 000	3 430	1 080	3	18.5
		CFH 6V	CFH 6VUU	CFH 6VR	CFH 6VUUR													6 960	8 530	2 110	12 000				
8	0 -0.015	CFH 8	CFH 8UU	CFH 8R	CFH 8UUR	19	11	8	M8x1.25	10	32	20	0.6	4	0.3	0.25	13	4 310	4 710	4 710	20 000	4 020	1 370	8	28.5
		CFH 8V	CFH 8VUU	CFH 8VR	CFH 8VUUR													8 130	11 170	4 710	9 000				
10	0 -0.015	CFH10	CFH10UU	CFH10R	CFH10UUR	22	12	10	M10x1.25	12	36	23	0.6	4	0.3	0.3	15	5 390	6 860	6 860	17 000	4 700	1 670	15	45
		CFH10V	CFH10VUU	CFH10VR	CFH10VUUR													9 510	14 500	7 450	7 500				
10	0 -0.015	CFH10-1	CFH10-1UU	CFH10-1R	CFH10-1UUR	26	12	10	M10x1.25	12	36	23	0.6	4	0.3	0.3	15	5 390	6 860	6 860	17 000	5 490	2 060	15	60
		CFH10-1V	CFH10-1VUU	CFH10-1VR	CFH10-1VUUR													9 510	14 500	7 450	7 500				
12	0 -0.018	CFH12	CFH12UU	CFH12R	CFH12UUR	30	14	12	M12x1.5	13	40	25	0.6	6	0.6	0.4	20	7 940	9 800	9 800	14 000	7 060	2 450	22	95
		CFH12V	CFH12VUU	CFH12VR	CFH12VUUR													13 430	19 700	11 270	6 000				
12	0 -0.018	CFH12-1	CFH12-1UU	CFH12-1R	CFH12-1UUR	32	14	12	M12x1.5	13	40	25	0.6	6	0.6	0.4	20	7 940	9 800	9 800	14 000	7 450	2 740	22	105
		CFH12-1V	CFH12-1VUU	CFH12-1VR	CFH12-1VUUR													13 430	19 700	11 270	6 000				
16	0 -0.018	CFH16	CFH16UU	CFH16R	CFH16UUR	35	18	16	M16x1.5	17	52	32.5	0.8	6	0.6	0.5	24	12 050	18 330	18 330	10 000	11 200	3 140	58	170
		CFH16V	CFH16VUU	CFH16VR	CFH16VUUR													20 680	37 630	19 800	4 500				

* Without seals, suitable for grease lubrication. In case of oil lubrication, up to 130% of this value shall be permissible, and 70% of this value shall apply for types with seals.

OUTER RINGS TOLERANCE (μm)

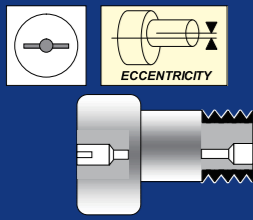
TYPE	Cylindrical outer ring	Crowned outer ring
CF5,CF6	0/-8	0/-50
CF8,CF10,CF10-1,CF12	0/-9	0/-50
CF12-1,CF16,CF18,CF20-1	0/-11	0/-50
CF20,CF24,CF24-1,CF30	0/-13	0/-50
CF30-1,CF30-2	0/-15	0/-50

ACCESSORIES

TYPE	STOP PLUG	RESIN PLUG	NUT
CF5	—	—	Attached
CF6/CF8/CF10/CF10-1	—	φ 4 Attached	Attached
CF12/CF12-1/CF16/CF18	φ 6 Attached	φ 6 Attached	Attached
CF20/CF20-1/CF24/CF24-1/CF30/CF30-1/CF30-2	φ 8 Attached	φ 8 Attached	Attached

CAM FOLLOWERS

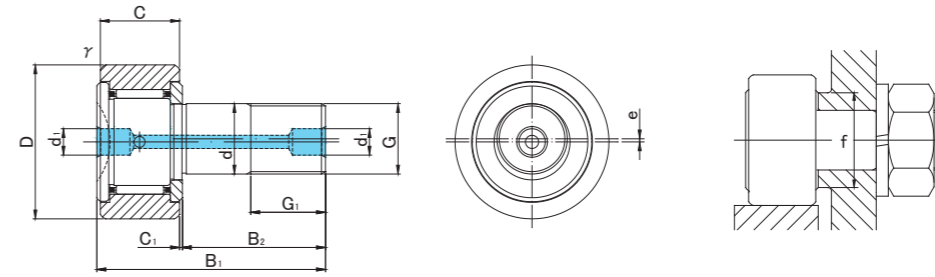
SOLID ECCENTRIC TYPE SCREWDRIVER SLOT HEAD



CFH



CFH.V



CFH TYPE

Prepacked Grease

Stud diameter (mm)	h7 tolerance	Designation				Dimensions (mm)												Basic dynamic load rating Cr N	Basic static load rating Cor N	Largest permissible load N	Limiting speed * rpm	Track load capacity		Max tightening torque N·m	Mass g (approx)
		Cylindrical outer ring		Crowned outer ring R500(CF18) R1000(CF20 ≤)		D	C	d	G	G1	B1	B2	C1	d1	r _s min	e	f min					Cylindrical outer ring N	Crowned outer ring N		
		Without seals	With seals	Without seals	With seals																				
18	0 -0.018	CFH18	CFH18UU	CFH18R	CFH18UUR	40	20	18	M18×1.5	19	58	36.5	0.8	6	1	0.6	26	14 700	25 200	25 200	8 500	14 400	3 720	87	250
		CFH18V	CFH18VUU	CFH18VR	CFH18VUUR													25 280	51 350	26 560	3 500				
20	0 -0.021	CFH20	CFH20UU	CFH20R	CFH20UUR	52	24	20	M20×1.5	21	66	40.5	0.8	8	1	0.7	36	20 680	34 600	32 140	7 000	23 200	8 230	120	460
		CFH20V	CFH20VUU	CFH20VR	CFH20VUUR													33 120	64 480	32 140	3 500				
20	0 -0.021	CFH20-1	CFH20-1UU	CFH20-1R	CFH20-1UUR	47	24	20	M20×1.5	21	66	40.5	0.8	8	1	0.7	36	20 680	34 600	32 140	7 000	21 000	7 150	120	385
		CFH20-1V	CFH20-1VUU	CFH20-1VR	CFH20-1VUUR													33 120	64 480	32 140	3 500				
24	0 -0.021	CFH24	CFH24UU	CFH24R	CFH24UUR	62	29	24	M24×1.5	25	80	49.5	0.8	8	1	0.8	40	30 480	52 630	49 500	6 500	34 200	10 500	220	815
		CFH24V	CFH24VUU	CFH24VR	CFH24VUUR													46 550	92 020	49 500	3 000				
24	0 -0.021	CFH24-1	CFH24-1UU	CFH24-1R	CFH24-1UUR	72	29	24	M24×1.5	25	80	49.5	0.8	8	1	0.8	40	30 480	52 630	49 500	6 500	39 800	12 900	220	1 140
		CFH24-1V	CFH24-1VUU	CFH24-1VR	CFH24-1VUUR													46 550	92 020	49 500	3 000				
30	0 -0.021	CFH30	CFH30UU	CFH30R	CFH30UUR	80	35	30	M30×1.5	32	100	63	1	8	1	1	46	45 370	85 060	73 700	5 000	52 600	14 900	450	1 870
		CFH30V	CFH30VUU	CFH30VR	CFH30VUUR													67 620	144 060	73 700	2 200				
30	0 -0.021	CFH30-1	CFH30-1UU	CFH30-1R	CFH30-1UUR	85	35	30	M30×1.5	32	100	63	1	8	1	1	46	45 370	85 060	73 700	5 000	56 000	16 100	450	2 030
		CFH30-1V	CFH30-1VUU	CFH30-1VR	CFH30-1VUUR													67 620	144 060	73 700	2 200				
30	0 -0.021	CFH30-2	CFH30-2UU	CFH30-2R	CFH30-2UUR	90	35	30	M30×1.5	32	100	63	1	8	1	1	46	45 370	85 060	73 700	5 000	59 300	17 300	450	2 220
		CFH30-2V	CFH30-2VUU	CFH30-2VR	CFH30-2VUUR													67 620	144 060	73 700	2 200				

* Without seals, suitable for grease lubrication. In case of oil lubrication, up to 130% of this value shall be permissible, and 70% of this value shall apply for types with seals.

OUTER RINGS TOLERANCE (μm)

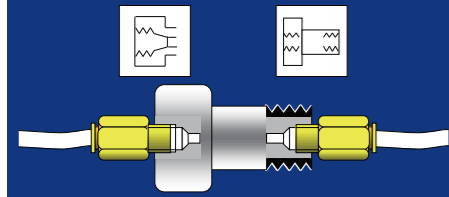
TYPE	Cylindrical outer ring	Crowned outer ring
CF5,CF6	0/-8	0/-50
CF8,CF10,CF10-1,CF12	0/-9	0/-50
CF12-1,CF16,CF18,CF20-1	0/-11	0/-50
CF20,CF24,CF24-1,CF30	0/-13	0/-50
CF30-1,CF30-2	0/-15	0/-50

ACCESSORIES

TYPE	STOP PLUG	RESIN PLUG	NUT
CF5	—	—	Attached
CF6/CF8/CF10/CF10-1	—	φ 4 Attached	Attached
CF12/CF12-1/CF16/CF18	φ 6 Attached	φ 6 Attached	Attached
CF20/CF20-1/CF24/CF24-1/CF30/CF30-1/CF30-2	φ 8 Attached	φ 8 Attached	Attached

CAM FOLLOWERS

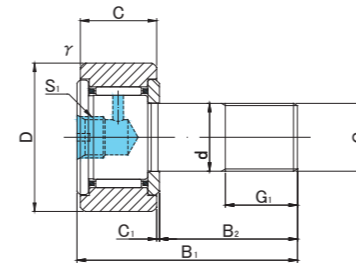
TAP HOLE FOR PIPING
SCREWDRIVER SLOT HEAD



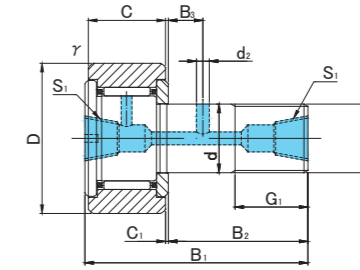
CFT



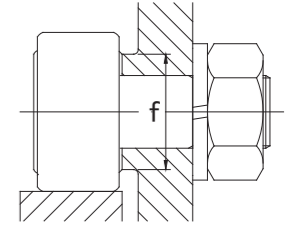
CFT.V



CFT6(V)~CFT10-1(V)



CFT12(V)~CFT18(V)



CFT TYPE

Prepacked Grease

Stud diameter (mm)	Designation				Dimensions (mm)													Basic dynamic load rating	Basic static load rating	Largest permissible load	Limiting speed *	Track load capacity		Max tightening torque	Mass						
	Cylindrical outer ring		Crowned outer ring R500(CF6 ~ CF18)		D	C	d	G	G1	B1	B2	B3	C1	S1	d2	r _s min	f min					Cr N	Cor N			N	rpm	Cylindrical outer ring N	Crowned outer ring N	N·m	g (approx)
	Without seals	With seals	Without seals	With seals																											
6	0 -0.012	CFT 6	CFT 6UU	CFT 6R	CFT 6UUR	16	11	6	M6×1	8	28	16	—	0.6	M6×0.75	—	0.3	11	3 630	3 630	2 110	25 000	3 430	1 080	3	18.5					
		CFT 6V	CFT 6VUU	CFT 6VR	CFT 6VUUR														6 960	8 530	2 110	12 000									
8	0 -0.015	CFT 8	CFT 8UU	CFT 8R	CFT 8UUR	19	11	8	M8×1.25	10	32	20	—	0.6	M6×0.75	—	0.3	13	4 310	4 710	4 710	20 000	4 020	1 370	8	28.5					
		CFT 8V	CFT 8VUU	CFT 8VR	CFT 8VUUR														8 130	11 170	4 710	9 000									
10	0 -0.015	CFT10	CFT10UU	CFT10R	CFT10UUR	22	12	10	M10×1.25	12	36	23	—	0.6	M6×0.75	—	0.3	15	5 390	6 860	6 860	17 000	4 700	1 670	15	45					
		CFT10V	CFT10VUU	CFT10VR	CFT10VUUR														9 510	14 500	7 450	7 500									
10	0 -0.015	CFT10-1	CFT10-1UU	CFT10-1R	CFT10-1UUR	26	12	10	M10×1.25	12	36	23	—	0.6	M6×0.75	—	0.3	15	5 390	6 860	6 860	17 000	5 490	2 060	15	60					
		CFT10-1V	CFT10-1VUU	CFT10-1VR	CFT10-1VUUR														9 510	14 500	7 450	7 500									
12	0 -0.018	CFT12	CFT12UU	CFT12R	CFT12UUR	30	14	12	M12×1.5	13	40	25	6	0.6	M6×0.75	3	0.6	20	7 940	9 800	9 800	14 000	7 060	2 450	22	95					
		CFT12V	CFT12VUU	CFT12VR	CFT12VUUR														13 430	19 700	11 270	6 000									
12	0 -0.018	CFT12-1	CFT12-1UU	CFT12-1R	CFT12-1UUR	32	14	12	M12×1.5	13	40	25	6	0.6	M6×0.75	3	0.6	20	7 940	9 800	9 800	14 000	7 450	2 740	22	105					
		CFT12-1V	CFT12-1VUU	CFT12-1VR	CFT12-1VUUR														13 430	19 700	11 270	6 000									
16	0 -0.018	CFT16	CFT16UU	CFT16R	CFT16UUR	35	18	16	M16×1.5	17	52	32.5	8	0.8	Rc1/8	3	0.6	24	12 050	18 330	18 330	10 000	11 200	3 140	58	170					
		CFT16V	CFT16VUU	CFT16VR	CFT16VUUR														20 680	37 630	19 800	4 500									
18	0 -0.018	CFT18	CFT18UU	CFT18R	CFT18UUR	40	20	18	M18×1.5	19	58	36.5	8	0.8	Rc1/8	3	1	26	14 700	25 200	25 200	8 500	14 400	3 720	87	250					
		CFT18V	CFT18VUU	CFT18VR	CFT18VUUR														25 280	51 350	26 560	3 500									

* Without seals, suitable for grease lubrication. In case of oil lubrication, up to 130% of this value shall be permissible, and 70% of this value shall apply for types with seals.

OUTER RINGS TOLERANCE (μm)

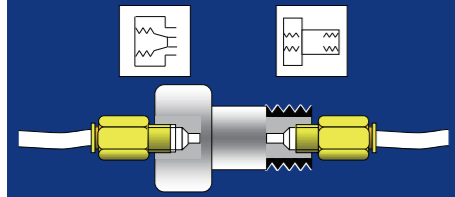
TYPE	Cylindrical outer ring	Crowned outer ring
CF6	0/-8	0/-50
CF8,CF10,CF10-1,CF12	0/-9	0/-50
CF12-1,CF16,CF18,CF20-1	0/-11	0/-50
CF20,CF24,CF24-1,CF30	0/-13	0/-50
CF30-1,CF30-2	0/-15	0/-50

ACCESSORIES

TYPE	Image
All types	NUT Attached

CAM FOLLOWERS

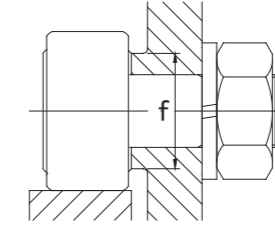
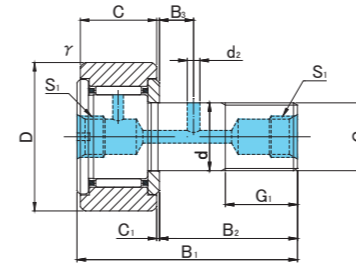
TAP HOLE FOR PIPING
SCREWDRIVER SLOT HEAD



CFT



CFT.V



CFT TYPE

Prepacked Grease

Stud diameter (mm)	Designation				Dimensions (mm)										Basic dynamic load rating	Basic static load rating	Largest permissible load	Limiting speed *	Track load capacity		Max tightening torque	Mass									
	Cylindrical outer ring		Crowned outer ring R1000(CF20 ≤)		D	C	d	G	G1	B1	B2	B3	C1	S1					d2	r _s min			f min	Cr N	Cor N	N	rpm	Cylindrical outer ring N	Crowned outer ring N	N·m	g (approx)
	Without seals	With seals	Without seals	With seals																											
20	0 -0.021	CFT20	CFT20UU	CFT20R	CFT20UUR	52	24	20	M20×1.5	21	66	40.5	9		0.8	Rc1/8	4	1			36	20 680						34 600	32 140		
		CFT20V	CFT20VUU	CFT20VR	CFT20VUUR									33 120					64 480	32 140		3 500									
20	0 -0.021	CFT20-1	CFT20-1UU	CFT20-1R	CFT20-1UUR	47	24	20	M20×1.5	21	66	40.5	9	0.8	Rc1/8	4	1	36	20 680	34 600	32 140	7 000	21 000	7 150	120	385					
		CFT20-1V	CFT20-1VUU	CFT20-1VR	CFT20-1VUUR														33 120	64 480	32 140	3 500									
24	0 -0.021	CFT24	CFT24UU	CFT24R	CFT24UUR	62	29	24	M24×1.5	25	80	49.5	11	0.8	Rc1/8	4	1	40	30 480	52 630	49 500	6 500	34 200	10 500	220	815					
		CFT24V	CFT24VUU	CFT24VR	CFT24VUUR														46 550	92 020	49 500	3 000									
24	0 -0.021	CFT24-1	CFT24-1UU	CFT24-1R	CFT24-1UUR	72	29	24	M24×1.5	25	80	49.5	11	0.8	Rc1/8	4	1	40	30 480	52 630	49 500	6 500	39 800	12 900	220	1 140					
		CFT24-1V	CFT24-1VUU	CFT24-1VR	CFT24-1VUUR														46 550	92 020	49 500	3 000									
30	0 -0.021	CFT30	CFT30UU	CFT30R	CFT30UUR	80	35	30	M30×1.5	32	100	63	15	1	Rc1/8	4	1	46	45 370	85 060	73 700	5 000	52 600	14 900	450	1 870					
		CFT30V	CFT30VUU	CFT30VR	CFT30VUUR														67 620	144 060	73 700	2 200									
30	0 -0.021	CFT30-1	CFT30-1UU	CFT30-1R	CFT30-1UUR	85	35	30	M30×1.5	32	100	63	15	1	Rc1/8	4	1	46	45 370	85 060	73 700	5 000	56 000	16 100	450	2 030					
		CFT30-1V	CFT30-1VUU	CFT30-1VR	CFT30-1VUUR														67 620	144 060	73 700	2 200									
30	0 -0.021	CFT30-2	CFT30-2UU	CFT30-2R	CFT30-2UUR	90	35	30	M30×1.5	32	100	63	15	1	Rc1/8	4	1	46	45 370	85 060	73 700	5 000	59 300	17 300	450	2 220					
		CFT30-2V	CFT30-2VUU	CFT30-2VR	CFT30-2VUUR														67 620	144 060	73 700	2 200									

* Without seals, suitable for grease lubrication. In case of oil lubrication, up to 130% of this value shall be permissible, and 70% of this value shall apply for types with seals.

OUTER RINGS TOLERANCE (μm)

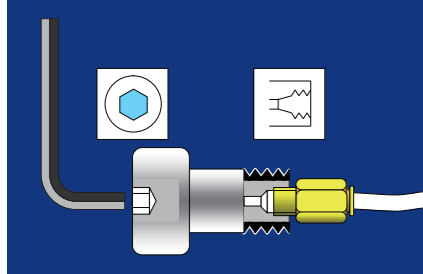
TYPE	Cylindrical outer ring	Crowned outer ring
CF6	0/-8	0/-50
CF8,CF10,CF10-1,CF12	0/-9	0/-50
CF12-1,CF16,CF18,CF20-1	0/-11	0/-50
CF20,CF24,CF24-1,CF30	0/-13	0/-50
CF30-1,CF30-2	0/-15	0/-50

ACCESSORIES

TYPE	
All types	NUT
	Attached

CAM FOLLOWERS

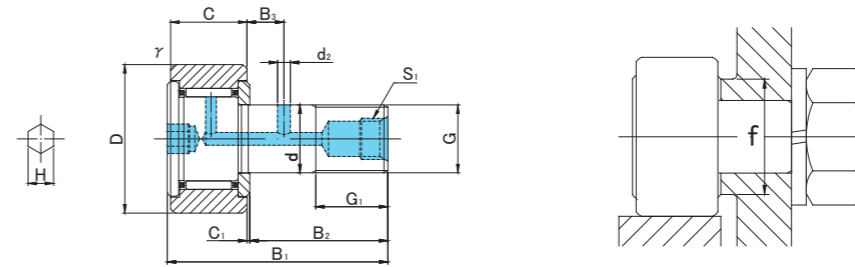
TAP HOLE FOR PIPING
HEXAGON SOCKET ON STUD HEAD



CFT..A



CFT..VA



CFT..A TYPE

Prepacked Grease

Stud diameter (mm)	h7 tolerance	Designation				Dimensions (mm)													Basic dynamic load rating Cr N	Basic static load rating Cor N	Largest permissible load N	Limiting speed * rpm	Track load capacity		Max tightening torque N·m	Mass g (approx)	
		Cylindrical outer ring		Crowned outer ring R500(CF12~CF18) R1000(CF20≤)		D	C	d	G	G1	B1	B2	B3	C1	S1	d2	H	rs min					f min	Cylindrical outer ring N			Crowned outer ring N
		Without seals	With seals	Without seals	With seals																						
12	0 -0.018	CFT12A	CFT12UUA	CFT12RA	CFT12UURA	30	14	12	M12×1.5	13	40	25	6	0.6	M6×0.75	3	6	0.6	20	7 940	9 800	9 800	14 000	7 060	2 450	22	95
		CFT12VA	CFT12VUUA	CFT12VRA	CFT12VUURA															13 430	19 700	11 270	6 000				
12	0 -0.018	CFT12-1A	CFT12-1UUA	CFT12-1RA	CFT12-1UURA	32	14	12	M12×1.5	13	40	25	6	0.6	M6×0.75	3	6	0.6	20	7 940	9 800	9 800	14 000	7 450	2 740	22	105
		CFT12-1VA	CFT12-1VUUA	CFT12-1VRA	CFT12-1VUURA															13 430	19 700	11 270	6 000				
16	0 -0.018	CFT16A	CFT16UUA	CFT16RA	CFT16UURA	35	18	16	M16×1.5	17	52	32.5	8	0.8	Rc1/8	3	6	0.6	24	12 050	18 330	18 330	10 000	11 200	3 140	58	170
		CFT16VA	CFT16VUUA	CFT16VRA	CFT16VUURA															20 680	37 630	19 800	4 500				
18	0 -0.018	CFT18A	CFT18UUA	CFT18RA	CFT18UURA	40	20	18	M18×1.5	19	58	36.5	8	0.8	Rc1/8	3	6	1	26	14 700	25 200	25 200	8 500	14 400	3 720	87	250
		CFT18VA	CFT18VUUA	CFT18VRA	CFT18VUURA															25 280	51 350	26 560	3 500				
20	0 -0.021	CFT20A	CFT20UUA	CFT20RA	CFT20UURA	52	24	20	M20×1.5	21	66	40.5	9	0.8	Rc1/8	4	8	1	36	20 680	34 600	32 140	7 000	23 200	8 230	120	460
		CFT20VA	CFT20VUUA	CFT20VRA	CFT20VUURA															33 120	64 480	32 140	3 500				
20	0 -0.021	CFT20-1A	CFT20-1UUA	CFT20-1RA	CFT20-1UURA	47	24	20	M20×1.5	21	66	40.5	9	0.8	Rc1/8	4	8	1	36	20 680	34 600	32 140	7 000	21 000	7 150	120	385
		CFT20-1VA	CFT20-1VUUA	CFT20-1VRA	CFT20-1VUURA															33 120	64 480	32 140	3 500				
24	0 -0.021	CFT24A	CFT24UUA	CFT24RA	CFT24UURA	62	29	24	M24×1.5	25	80	49.5	11	0.8	Rc1/8	4	8	1	40	30 480	52 630	49 500	6 500	34 200	10 500	220	815
		CFT24VA	CFT24VUUA	CFT24VRA	CFT24VUURA															46 550	92 020	49 500	3 000				
24	0 -0.021	CFT24-1A	CFT24-1UUA	CFT24-1RA	CFT24-1UURA	72	29	24	M24×1.5	25	80	49.5	11	0.8	Rc1/8	4	8	1	40	30 480	52 630	49 500	6 500	39 800	12 900	220	1 140
		CFT24-1VA	CFT24-1VUUA	CFT24-1VRA	CFT24-1VUURA															46 550	92 020	49 500	3 000				
30	0 -0.021	CFT30A	CFT30UUA	CFT30RA	CFT30UURA	80	35	30	M30×1.5	32	100	63	15	1	Rc1/8	4	8	1	46	45 370	85 060	73 700	5 000	52 600	14 900	450	1 870
		CFT30VA	CFT30VUUA	CFT30VRA	CFT30VUURA															67 620	144 060	73 700	2 200				
30	0 -0.021	CFT30-1A	CFT30-1UUA	CFT30-1RA	CFT30-1UURA	85	35	30	M30×1.5	32	100	63	15	1	Rc1/8	4	8	1	46	45 370	85 060	73 700	5 000	56 000	16 100	450	2 030
		CFT30-1VA	CFT30-1VUUA	CFT30-1VRA	CFT30-1VUURA															67 620	144 060	73 700	2 200				
30	0 -0.021	CFT30-2A	CFT30-2UUA	CFT30-2RA	CFT30-2UURA	90	35	30	M30×1.5	32	100	63	15	1	Rc1/8	4	8	1	46	45 370	85 060	73 700	5 000	59 300	17 300	450	2 220
		CFT30-2VA	CFT30-2VUUA	CFT30-2VRA	CFT30-2VUURA															67 620	144 060	73 700	2 200				

* Without seals, suitable for grease lubrication. In case of oil lubrication, up to 130% of this value shall be permissible, and 70% of this value shall apply for types with seals.

OUTER RINGS TOLERANCE

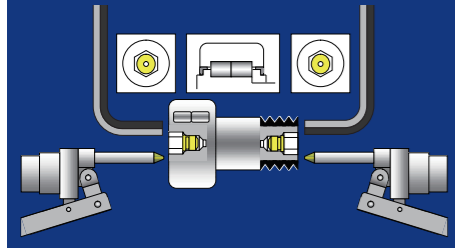
TYPE	Cylindrical outer ring	Crowned outer ring
CF12	0/-9	0/-50
CF12-1,CF16,CF18,CF20-1	0/-11	0/-50
CF20,CF24,CF24-1,CF30	0/-13	0/-50
CF30-1,CF30-2	0/-15	0/-50

ACCESSORIES

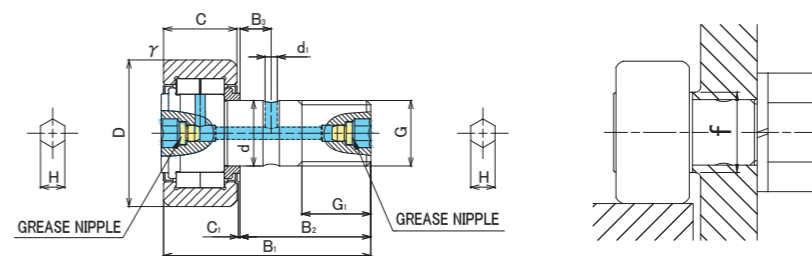
TYPE	
All types	NUT Attached

CAM FOLLOWERS

FULL COMPLEMENT DOUBLE ROW
HEXAGON SOCKET ON BOTH SIDES
GREASE NIPPLE INSTALLED



NUCF..AB



NUCF TYPE

Prepacked Grease

Stud diameter (mm)	h7 tolerance	Designation		Dimensions (mm)										Basic dynamic load rating	Basic static load rating	Largest permissible load	Limiting speed	Track load capacity		Max tightening torque	Mass				
		Cylindrical outer ring	Crowned outer ring R500(NUCF16~NUCF18) R1000(NUCF20≤)	D	C	d	G	G1	B1	B2	B3	C1	D2					H	r _s min			f min	Cr N	Cor N	N
16	0 -0.018	NUCF16AB	NUCF16RAB	35	18	16	M16x1.5	17	52	32.5	7.8	0.8		3	6	0.6	20	23 400	27 200	11 900	5 200	11 200	3 140	58	167
		NUCF18AB	NUCF18RAB	40	20	18	M18x1.5	19	58	36.5	8	0.8		3	6	1	22	25 200	30 900	22 200	4 700	14 400	3 720	87	248
20	0 -0.021	NUCF20AB	NUCF20RAB	52	24	20	M20x1.5	21	66	40.5	9	0.8		4	8	1	31	43 000	58 100	25 700	3 300	23 200	8 230	120	461
		NUCF20-1AB	NUCF20-1RAB	47	24	20	M20x1.5	21	66	40.5	9	0.8		4	8	1	27	38 900	48 900	25 300	3 800	21 000	7 150	120	390
24	0 -0.021	NUCF24AB	NUCF24RAB	62	28	24	M24x1.5	25	80	49.5	11	1.3		4	8	1	38	57 600	74 300	35 000	2 800	32 000	10 500	220	789
		NUCF24-1AB	NUCF24-1RAB	72	28	24	M24x1.5	25	80	49.5	11	1.3		4	8	1.1	44	63 300	87 500	53 700	2 300	37 200	12 900	220	1 020
30	0 -0.021	NUCF30AB	NUCF30RAB	80	35	30	M30x1.5	32	100	63	15	1		4	8	1.1	47	94 800	135 700	73 700	2 100	52 600	14 900	450	1 630
		NUCF30-2AB	NUCF30-2RAB	90	35	30	M30x1.5	32	100	63	15	1		4	8	1.1	47	94 800	135 700	73 700	2 100	59 300	17 300	450	1 990

OUTER RINGS TOLERANCE (μm)

TYPE	Cylindrical outer ring	Crowned outer ring
NUCF16,NUCF18,NUCF20-1	0/-11	0/-50
NUCF20,NUCF24,NUCF24-1,NUCF30	0/-13	0/-50
NUCF30-2	0/-15	0/-50

ACCESSORIES

TYPE		
All types	Installed	Attached