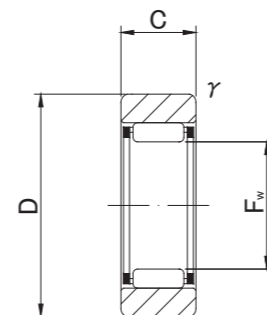


ROLLER FOLLOWERS

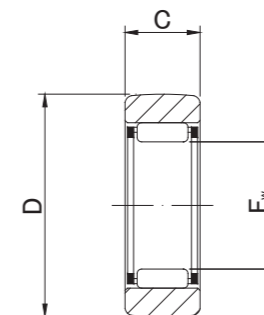
SEPARABLE WITHOUT INNER RING



RNAS T



RNAS T



RNAS T.R

RNAS T TYPE

Prepacked Grease

Shaft Diameter (mm)	Designation		Dimensions (mm)				Basic dynamic load rating	Basic static load rating	Track load capacity		Limiting speed *	Mass		
	Cylindrical outer ring	Crowned outer ring (R500)	Fw	D	C	r/s min			Cr N	Cor N			Cylindrical outer ring N	Crowned outer ring N
7	RNAS T 5	RNAS T 5R	7 ^{+0.022} / _{+0.013}	16	7.8	0.3	2 740	2 390	2 350	1 080	30 000	8.9		
10	RNAS T 6	RNAS T 6R	10 ^{+0.027} / _{+0.016}	19	9.8	0.3	4 120	4 550	3 530	1 370	20 000	13.9		
12	RNAS T 8	RNAS T 8R	12 ^{+0.027} / _{+0.016}	24	9.8	0.6	5 680	5 890	4 020	1 860	17 000	23.5		
14	RNAS T10	RNAS T10R	14 ^{+0.027} / _{+0.016}	30	11.8	1	9 700	9 670	5 590	2 450	15 000	42.5		
16	RNAS T12	RNAS T12R	16 ^{+0.027} / _{+0.016}	32	11.8	1	10 400	10 900	5 980	2 740	13 000	49.5		
20	RNAS T15	RNAS T15R	20 ^{+0.033} / _{+0.020}	35	11.8	1	12 300	14 300	6 570	3 140	10 000	50		
22	RNAS T17	RNAS T17R	22 ^{+0.033} / _{+0.020}	40	15.8	1	17 400	20 900	10 900	3 720	9 500	90		
25	RNAS T20	RNAS T20R	25 ^{+0.033} / _{+0.020}	47	15.8	1	19 200	24 500	12 700	4 610	8 500	135		
30	RNAS T25	RNAS T25R	30 ^{+0.033} / _{+0.020}	52	15.8	1	20 700	28 400	14 100	5 290	7 000	152		
38	RNAS T30	RNAS T30R	38 ^{+0.041} / _{+0.025}	62	19.8	1	30 300	45 400	22 100	6 660	5 500	255		
42	RNAS T35	RNAS T35R	42 ^{+0.041} / _{+0.025}	72	19.8	1	32 200	50 600	25 700	8 130	5 000	375		
50	RNAS T40	RNAS T40R	50 ^{+0.041} / _{+0.025}	80	19.8	1.5	35 700	61 100	26 900	9 310	4 000	420		
55	RNAS T45	RNAS T45R	55 ^{+0.049} / _{+0.030}	85	19.8	1.5	37 100	66 400	28 500	10 100	4 000	460		
60	RNAS T50	RNAS T50R	60 ^{+0.049} / _{+0.030}	90	19.8	1.5	38 700	71 800	30 200	11 000	3 500	500		

* Suitable for grease lubrication. In case of oil lubrication, up to 130% of this value shall be permissible.

OUTER RINGS TOLERANCE (μm)

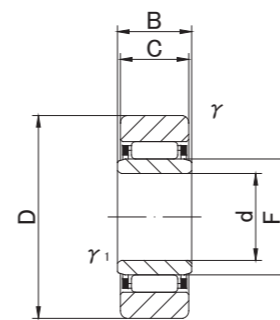
TYPE	Cylindrical outer ring	Crowned outer ring
RNAS T5	0/-8	0/-50
RNAS T6,RNAS T8,RNAS T10	0/-9	0/-50
RNAS T12,RNAS T15,RNAS T17,RNAS T20	0/-11	0/-50
RNAS T25,RNAS T30,RNAS T35,RNAS T40	0/-13	0/-50
RNAS T45,RNAS T50	0/-15	0/-50

ROLLER FOLLOWERS

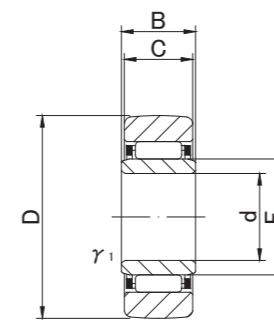
SEPARABLE WITH INNER RING



NAST



NAST



NAST..R

NAST TYPE

Prepacked Grease

Shaft Diameter (mm)	Designation		Dimensions (mm)							Basic dynamic load rating	Basic static load rating	Track load capacity		Limiting speed *	Mass		
	Cylindrical outer ring	Crowned outer ring (R500)	d	D	B	C	r/s min	r1s min	F			Cr N	Cor N			Cylindrical outer ring N	Crowned outer ring N
6	NAST 6	NAST 6R	6 ⁰ _{-0.008}	19	10	9.8	0.3	0.3	10	4 120	4 550	3 530	1 370	20 000	17.8		
8	NAST 8	NAST 8R	8 ⁰ _{-0.008}	24	10	9.8	0.6	0.3	12	5 680	5 890	4 020	1 860	17 000	28		
10	NAST10	NAST10R	10 ⁰ _{-0.008}	30	12	11.8	1	0.3	14	9 700	9 670	5 590	2 450	15 000	50		
12	NAST12	NAST12R	12 ⁰ _{-0.008}	32	12	11.8	1	0.3	16	10 400	10 900	5 980	2 740	13 000	58		
15	NAST15	NAST15R	15 ⁰ _{-0.008}	35	12	11.8	1	0.3	20	12 300	14 300	6 570	3 140	10 000	62		
17	NAST17	NAST17R	17 ⁰ _{-0.010}	40	16	15.8	1	0.3	22	17 400	20 900	10 900	3 720	9 500	110		
20	NAST20	NAST20R	20 ⁰ _{-0.010}	47	16	15.8	1	0.3	25	19 200	24 500	12 700	4 610	8 500	155		
25	NAST25	NAST25R	25 ⁰ _{-0.010}	52	16	15.8	1	0.3	30	20 700	28 400	14 100	5 290	7 000	180		
30	NAST30	NAST30R	30 ⁰ _{-0.010}	62	20	19.8	1	0.6	38	30 300	45 400	22 100	6 660	5 500	320		
35	NAST35	NAST35R	35 ⁰ _{-0.012}	72	20	19.8	1	0.6	42	32 200	50 600	25 700	8 130	5 000	440		
40	NAST40	NAST40R	40 ⁰ _{-0.012}	80	20	19.8	1.5	1	50	35 700	61 100	26 900	9 310	4 000	530		
45	NAST45	NAST45R	45 ⁰ _{-0.012}	85	20	19.8	1.5	1	55	37 100	66 400	28 500	10 100	4 000	580		
50	NAST50	NAST50R	50 ⁰ _{-0.012}	90	20	19.8	1.5	1	60	38 700	71 800	30 200	11 000	3 500	635		

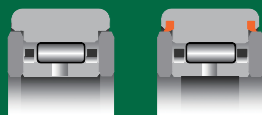
* Suitable for grease lubrication. In case of oil lubrication, up to 130% of this value shall be permissible.

OUTER RINGS TOLERANCE (Outside diameter) (μm)

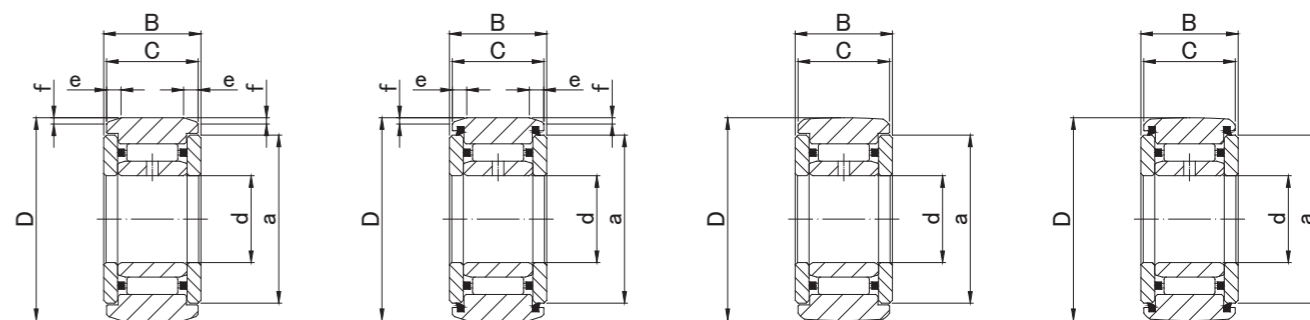
TYPE	Cylindrical outer ring	Crowned outer ring
NAST6,NAST8,NAST10	0/-9	0/-50
NAST12,NAST15,NAST17,NAST20	0/-11	0/-50
NAST25,NAST30,NAST35,NAST40	0/-13	0/-50
NAST45,NAST50	0/-15	0/-50

ROLLER FOLLOWERS

SEPARABLE WITH INNER RING WITH SHIELD



NAST..ZZ



NAST..ZZ

NAST..ZZUU

NAST..ZZR

NAST..ZZUUR

NAST..ZZ TYPE

Prepacked Grease

Shaft Diameter (mm)	Designation				Dimensions (mm)							Basic dynamic load rating	Basic static load rating	Track load capacity		Limiting speed *	Mass		
	Cylindrical outer ring		Crowned outer ring (R500)		d	D	B	C	a	e	f			Cr N	Cor N			Cylindrical outer ring N	Crowned outer ring N
	Without seals	With seals	Without seals	With seals															
6	NAST 6ZZ	NAST 6ZZUU	NAST 6ZZR	NAST 6ZZUUR	6 ⁰ _{-0.008}	19	14	13.8	14		2.5	0.8	4 120	4 550	3 530	1 370	20 000	24.5	
8	NAST 8ZZ	NAST 8ZZUU	NAST 8ZZR	NAST 8ZZUUR	8 ⁰ _{-0.008}	24	14	13.8	17.5		2.5	0.8	5 680	5 890	4 510	1 860	17 000	39	
10	NAST10ZZ	NAST10ZZUU	NAST10ZZR	NAST10ZZUUR	10 ⁰ _{-0.008}	30	16	15.8	23.5		2.5	0.8	9 700	9 670	6 860	2 450	15 000	65	
12	NAST12ZZ	NAST12ZZUU	NAST12ZZR	NAST12ZZUUR	12 ⁰ _{-0.008}	32	16	15.8	25.5		2.5	0.8	10 400	10 900	7 350	2 740	13 000	75	
15	NAST15ZZ	NAST15ZZUU	NAST15ZZR	NAST15ZZUUR	15 ⁰ _{-0.008}	35	16	15.8	29		2.5	0.8	12 300	14 300	8 040	3 140	10 000	83	
17	NAST17ZZ	NAST17ZZUU	NAST17ZZR	NAST17ZZUUR	17 ⁰ _{-0.010}	40	20	19.8	32.5		3	1	17 400	20 900	11 800	3 720	9 500	135	
20	NAST20ZZ	NAST20ZZUU	NAST20ZZR	NAST20ZZUUR	20 ⁰ _{-0.010}	47	20	19.8	38		3	1	19 200	24 500	13 800	4 610	8 500	195	
25	NAST25ZZ	NAST25ZZUU	NAST25ZZR	NAST25ZZUUR	25 ⁰ _{-0.010}	52	20	19.8	43		3	1	20 700	28 400	15 300	5 290	7 000	225	
30	NAST30ZZ	NAST30ZZUU	NAST30ZZR	NAST30ZZUUR	30 ⁰ _{-0.010}	62	25	24.8	50.5		4	1.2	30 300	45 400	22 100	6 660	5 500	400	
35	NAST35ZZ	NAST35ZZUU	NAST35ZZR	NAST35ZZUUR	35 ⁰ _{-0.012}	72	25	24.8	53.5		4	1.2	32 200	50 600	25 700	8 130	5 000	550	
40	NAST40ZZ	NAST40ZZUU	NAST40ZZR	NAST40ZZUUR	40 ⁰ _{-0.012}	80	26	25.8	61.5		4	1.2	35 700	61 100	30 300	9 310	4 000	710	
45	NAST45ZZ	NAST45ZZUU	NAST45ZZR	NAST45ZZUUR	45 ⁰ _{-0.012}	85	26	25.8	66.5		4	1.2	37 100	66 400	31 100	10 100	4 000	760	
50	NAST50ZZ	NAST50ZZUU	NAST50ZZR	NAST50ZZUUR	50 ⁰ _{-0.012}	90	26	25.8	76		4	1.2	38 700	71 800	34 000	11 000	3 500	830	

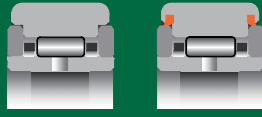
* Without seals, suitable for grease lubrication. In case of oil lubrication, up to 130% of this value shall be permissible, and 70% of this value shall apply for types with seals.

OUTER RINGS TOLERANCE (Outside diameter) (µm)

TYPE	Cylindrical outer ring	Crowned outer ring
NAST6,NAST8,NAST10	0/-9	0/-50
NAST12,NAST15,NAST17,NAST20	0/-11	0/-50
NAST25,NAST30,NAST35,NAST40	0/-13	0/-50
NAST45,NAST50	0/-15	0/-50

ROLLER FOLLOWERS

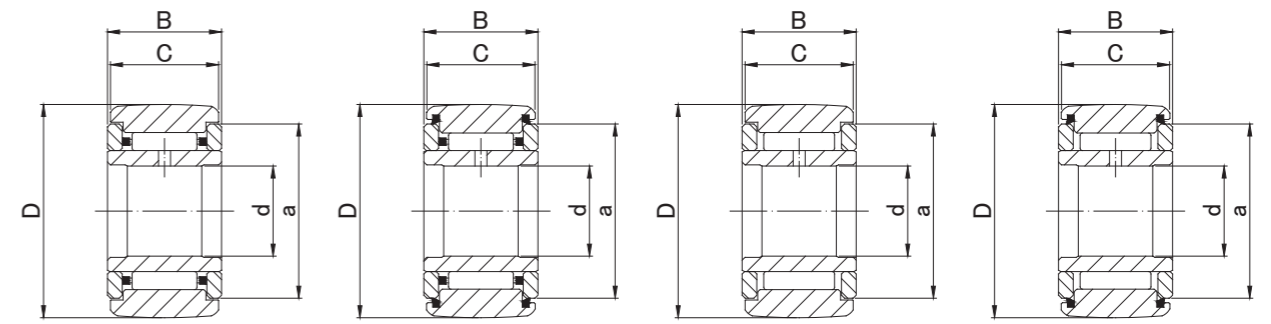
NON SEPARABLE WITH INNER RING



NART..R



NART..VR



NART..R
NART..X

NART..UUR
NART..UUX

NART..VR
NART..VX

NART..UUVR
NART..UUVX

NART TYPE

Prepacked Grease

Shaft Diameter (mm)	Designation				Dimensions (mm)					Basic dynamic load rating Cr N	Basic static load rating Cor N	Track load capacity		Limiting speed * rpm	Mass g (approx)
	Crowned outer ring R500(≤ NART17) R1000(NART20 ≤)		Cylindrical outer ring		d	D	B	C	a			Crowned outer ring N	Cylindrical outer ring N		
	Without seals	With seals	Without seals	With seals											
5	NART 5R NART 5VR	NART 5UUR NART 5UUVR	NART 5X NART 5VX	NART 5UUX NART 5UUVX	5 ⁰ -0.008	16	12	11	12	3 620 6 760	3 720 8 340	1 080	3 430	25 000 8 500	14.5 15.1
6	NART 6R NART 6VR	NART 6UUR NART 6UUVR	NART 6X NART 6VX	NART 6UUX NART 6UUVX	6 ⁰ -0.008	19	12	11	14	4 200 7 640	4 700 10 300	1 370	4 020	20 000 7 000	20.5 21.5
8	NART 8R NART 8VR	NART 8UUR NART 8UUVR	NART 8X NART 8VX	NART 8UUX NART 8UUVX	8 ⁰ -0.008	24	15	14	17.5	6 600 11 800	7 300 15 600	1 860	5 950	17 000 5 500	41.5 42.5
10	NART10R NART10VR	NART10UUR NART10UUVR	NART10X NART10VX	NART10UUX NART10UUVX	10 ⁰ -0.008	30	15	14	23.5	8 600 15 600	8 300 18 100	2 450	7 060	15 000 5 000	64.5 66.5
12	NART12R NART12VR	NART12UUR NART12UUVR	NART12X NART12VX	NART12UUX NART12UUVX	12 ⁰ -0.008	32	15	14	25.5	9 100 16 800	9 200 20 500	2 740	7 450	13 000 4 500	71 73
15	NART15R NART15VR	NART15UUR NART15UUVR	NART15X NART15VX	NART15UUX NART15UUVX	15 ⁰ -0.008	35	19	18	29	14 400 25 100	17 600 36 400	3 140	11 200	10 000 3 500	102 106
17	NART17R NART17VR	NART17UUR NART17UUVR	NART17X NART17VX	NART17UUX NART17UUVX	17 ⁰ -0.008	40	21	20	32.5	18 600 32 000	22 500 46 200	3 720	14 400	9 500 3 000	149 155
20	NART20R NART20VR	NART20UUR NART20UUVR	NART20X NART20VX	NART20UUX NART20UUVX	20 ⁰ -0.010	47	25	24	38	24 100 41 700	32 700 67 300	7 150	21 000	8 000 2 500	250 255
25	NART25R NART25VR	NART25UUR NART25UUVR	NART25X NART25VX	NART25UUX NART25UUVX	25 ⁰ -0.010	52	25	24	43	25 800 45 500	37 500 79 000	8 230	23 200	7 000 2 500	285 295
30	NART30R NART30VR	NART30UUR NART30UUVR	NART30X NART30VX	NART30UUX NART30UUVX	30 ⁰ -0.010	62	29	28	50.5	36 200 59 800	56 900 110 400	10 500	33 000	5 500 1 800	470 485
35	NART35R NART35VR	NART35UUR NART35UUVR	NART35X NART35VX	NART35UUX NART35UUVX	35 ⁰ -0.012	72	29	28	53.5	38 200 63 000	62 800 121 500	12 900	38 000	5 000 1 700	640 655
40	NART40R NART40VR	NART40UUR NART40UUVR	NART40X NART40VX	NART40UUX NART40UUVX	40 ⁰ -0.012	80	32	30	61.5	46 200 76 200	84 700 164 200	14 900	44 400	4 000 1 400	845 865
45	NART45R NART45VR	NART45UUR NART45UUVR	NART45X NART45VX	NART45UUX NART45UUVX	45 ⁰ -0.012	85	32	30	66.5	49 300 80 200	95 200 181 100	16 100	47 000	4 000 1 300	915 935
50	NART50R NART50VR	NART50UUR NART50UUVR	NART50X NART50VX	NART50UUX NART50UUVX	50 ⁰ -0.012	90	32	30	76	51 100 84 100	102 300 198 000	17 300	50 000	3 500 1 200	980 1 010

* Without seals, suitable for grease lubrication. In case of oil lubrication, up to 130% of this value shall be permissible, and 70% of this value shall apply for types with seals.

OUTER RINGS TOLERANCE (Outside diameter) (μm)

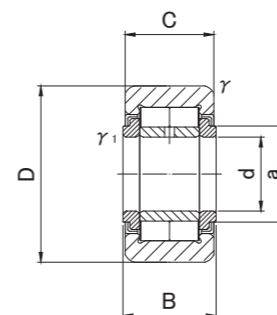
TYPE	Crowned outer ring	Cylindrical outer ring
NART5	0/-50	0/-8
NART6,NART8,NART10	0/-50	0/-9
NART12,NART15,NART17,NART20	0/-50	0/-11
NART25,NART30,NART35,NART40	0/-50	0/-13
NART45,NART50	0/-50	0/-15

ROLLER FOLLOWERS

FULL COMPLEMENT DOUBLE ROW
NON SEPARABLE
WITH INNER RING



NURT



NURT..R
NURT..X

NURT TYPE

Prepacked Grease

Shaft Diameter (mm)	Designation		Dimensions (mm)							Basic dynamic load rating	Basic static load rating	Track load capacity		Limiting speed	Mass		
	Crowned outer ring R500(≤NURT17-1) R1000(NURT20≤)	Cylindrical outer ring	d	D	B	C	a	r _s min	r _{1s} min			Cr N	Cor N			Crowned outer ring	Cylindrical outer ring
	N															N	
15	NURT15R	NURT15X	15 ⁰ _{-0.008}	35	19	18	20	0.6	0.3	23 400	27 200	3 140	11 200	5 200	100		
	NURT15-1R	NURT15-1X		42	19	18	20	0.6	0.3	23 400	27 200	3 930	13 900	5 200	160		
17	NURT17R	NURT17X	17 ⁰ _{-0.008}	40	21	20	22	1	0.5	25 200	30 900	3 720	14 400	4 700	147		
	NURT17-1R	NURT17-1X		47	21	20	22	1	0.5	25 200	30 900	4 550	17 300	4 700	222		
20	NURT20R	NURT20X	20 ⁰ _{-0.010}	47	25	24	27	1	0.5	38 900	48 900	7 150	21 000	3 800	245		
	NURT20-1R	NURT20-1X		52	25	24	27	1	0.5	38 900	48 900	8 230	23 200	3 800	321		
25	NURT25R	NURT25X	25 ⁰ _{-0.010}	52	25	24	31	1	0.5	43 000	58 100	8 230	23 200	3 300	281		
	NURT25-1R	NURT25-1X		62	25	24	31	1	0.5	43 000	58 100	10 500	27 400	3 300	450		
30	NURT30R	NURT30X	30 ⁰ _{-0.010}	62	29	28	38	1	0.5	57 500	74 300	10 500	32 000	2 800	466		
	NURT30-1R	NURT30-1X		72	29	28	38	1	0.5	57 500	74 300	12 900	37 200	2 800	697		
35	NURT35R	NURT35X	35 ⁰ _{-0.012}	72	29	28	44	1.1	0.6	63 300	87 500	12 900	37 200	2 300	630		
	NURT35-1R	NURT35-1X		80	29	28	44	1.1	0.6	63 300	87 500	14 900	41 300	2 300	840		
40	NURT40R	NURT40X	40 ⁰ _{-0.012}	80	32	30	51	1.1	0.6	86 900	124 600	14 900	44 300	1 900	817		
	NURT40-1R	NURT40-1X		90	32	30	51	1.1	0.6	86 900	124 600	17 300	49 800	1 900	1 130		
45	NURT45R	NURT45X	45 ⁰ _{-0.012}	85	32	30	55	1.1	0.6	91 700	137 100	16 100	47 100	1 700	883		
	NURT45-1R	NURT45-1X		100	32	30	55	1.1	0.6	91 700	137 100	19 840	55 400	1 700	1 400		
50	NURT50R	NURT50X	50 ⁰ _{-0.012}	90	32	30	60	1.1	0.6	96 300	149 700	17 300	49 800	1 500	950		
	NURT50-1R	NURT50-1X		110	32	30	60	1.1	0.6	96 300	149 700	22 530	60 900	1 500	1 690		

OUTER RINGS TOLERANCE (Outside diameter) (μm)

TYPE	Crowned outer ring	Cylindrical outer ring
NURT15, NURT15-1, NURT17, NURT17-1, NURT20	0/-50	0/-11
NURT20-1, NURT25, NURT25-1, NURT30, NURT30-1, NURT35, NURT35-1, NURT40	0/-50	0/-13
NURT40-1, NURT45, NURT45-1, NURT50, NURT50-1	0/-50	0/-15